

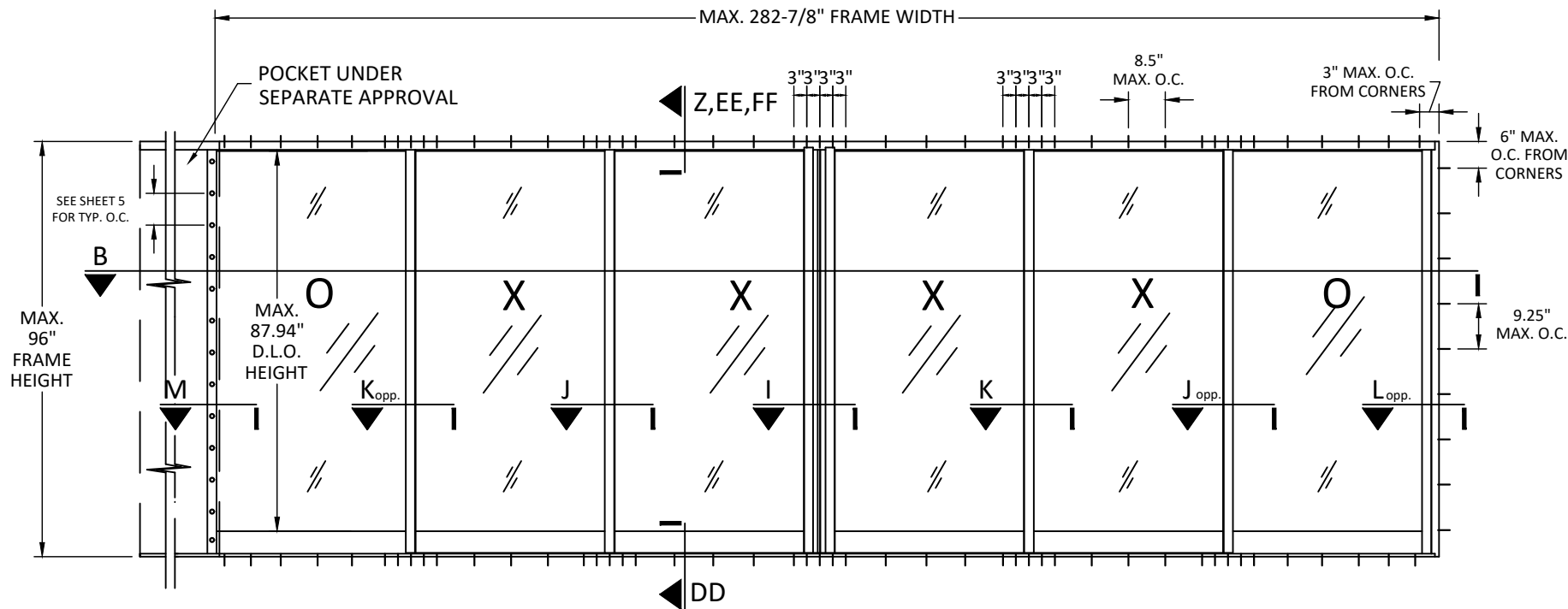
AIR MASTER WINDOWS AND DOORS

SERIES ALUMINUM SLIDING HP DOOR

(HVHZ) (IMPACT)



P.O. BOX 2097
 BARCELONETA, PR 00617
 WWW.AIRMASTERPR.COM
 PH: (787)846-2110
 FAX: (787)623-0085



GENERAL NOTES:

- THIS SLIDING DOOR SYSTEM HAS BEEN DESIGNED AND TESTED TO COMPLY WITH THE REQUIREMENTS OF THE CURRENT FLORIDA BUILDING CODE (FBC), INCLUDING THE HVHZ, UNDER THE SPECIFIC CONDITIONS SHOWN ON THIS DRAWING. THIS SLIDING DOOR SYSTEM HAS BEEN TESTED TO TAS 201-94, TAS 202-94 & TAS 203-94. THE HIGH PERFORMANCE SLIDING DOOR, IS LARGE MISSILE IMPACT RESISTANT.
- 2x WOOD BUCKS SHALL BE INSTALLED AND PROPERLY ANCHORED SO THAT THE BUILDING RESISTS THE SUPERIMPOSED LOADS IN ACCORDANCE WITH REQUIREMENTS OF FBC.
- 1x WOOD BUCKS SHALL BE INSTALLED AND ANCHORED SUCH THAT THEY ARE STATIC DURING INSTALLATION AND ACT AS SHEAR BLOCKS DURING LOADING TRANSFER FOR FASTENERS THROUGH THE DOOR FRAME TO THE CONCRETE.
- ANCHOR CONDITIONS NOT DESCRIBED IN THIS DRAWING ARE TO BE ENGINEERED ON A SITE SPECIFIC BASIS.
- DETERMINE THE POSITIVE AND NEGATIVE DESIGN LOADS TO USE WHEN REFERENCING THESE DOCUMENTS IN ACCORDANCE WITH THE GOVERNING CODE AND GOVERNING WIND VELOCITY. FOR WIND LOAD CALCULATIONS IN ACCORDANCE WITH ASCE 7, WIND LOADS MAY BE PERMITTED TO BE MULTIPLIED BY 0.6 FOR CONVERSION FROM LRFD TO ASD LOADS.
- THESE PRODUCT EVALUATION DOCUMENTS ARE PREPARED BY THE PRODUCT ENGINEER AND ARE GENERIC. THEY DO NOT INCLUDE INFORMATION PREPARED FOR A SPECIFIC SITE.
- THESE PRODUCT EVALUATION DOCUMENTS ARE SUITABLE TO BE APPLIED BY THE CONTRACTOR PROVIDED THE CONTRACTOR DOES NOT DEVIATE FROM THE CONDITIONS DETAILED HEREIN AND THE CONTRACTOR VERIFIES THE EXISTING STRUCTURE IS CAPABLE OF SUPPORTING THE LOADS.
- WHEN THE SITE CONDITIONS DEVIATE FROM THESE PRODUCT EVALUATION DOCUMENTS, THE BUILDING OFFICIAL MAY ELECT ONE OF THE FOLLOWING OPTIONS:
 - NON-HVHZ ONLY: REQUIRE THAT SITE SPECIFIC DOCUMENTS BE PREPARED, SIGNED, DATED AND SEALED BY A LICENSED ENGINEER OR REGISTERED ARCHITECT, WHICH DETAIL AND JUSTIFY THE DEVIATION. SAID DOCUMENTS SHALL BE SUBMITTED TO THE PRODUCT ENGINEER FOR REVIEW AS A CONDITION TO THE BUILDING OFFICIAL GRANTING HIS/HER APPROVAL
 - REQUIRE THAT A ONE-TIME SITE SPECIFIC APPROVAL BE APPLIED FOR AND SECURED FROM THE MIAMI-DADE COUNTY PRODUCT CONTROL SECTION. WHEN THE SITE CONDITION DEVIATIONS OCCUR WITHIN THE HIGH VELOCITY HURRICANE ZONE AREAS ONLY OPTION "B" SHALL BE ACCEPTED BY THE BUILDING OFFICIAL
- WHERE THE CONTRACTOR OR THE BUILDING OFFICIAL REQUIRES DOCUMENTS FOR A SITE SPECIFIC APPLICATION, THESE DOCUMENTS SHALL BE PREPARED BY A FLORIDA REGISTERED ENGINEER OR ARCHITECT FOR SAID APPLICATION.
- ALTERATIONS OR ADDITIONS TO THIS DOCUMENT ARE NOT PERMITTED.
- SEE SHEET 5 FOR GLAZING DETAILS. LAMINATED MONOLITHIC OR LAMINATED INSULATED GLASS MAY BE USED AT THE DESIGN PRESSURES GIVE ON PAGES 10 AND 11. MAXIMUM D.L.O. AREA OF I.G. GLAZING IS 22.7 SQ. FT.
- SEE DOOR SIZE VS DESIGN LOADS TABLES & ANCHOR SCHEDULE ON PAGES 8, 10, & 11 FOR DESIGN PRESSURES AND REQUIRED ANCHORS.
- THIS PRODUCT HAS BEEN SUCCESSFULLY TESTED BY BLACKWATER TESTING FOR FLORIDA BUILDING CODE COMPLIANCE.
 - BLACKWATER TESTING INC. REPORTS NO. BT-AM-12-003 (REVISED 6/31/13), BT-AM-12-003A, & BT-AM-14-001(B) (REVISED 08/27/15).
- ADDITIONAL PROTECTION FROM WINDBORNE DEBRIS (SHUTTERS) IS NOT REQUIRED ON OPENINGS WHERE THIS PRODUCT IS USED.
- COMPONENTS 1 THROUGH 13 ARE 6063-T5 EXTRUDED ALUMINUM ALLOY UNLESS OTHERWISE NOTED.
- ALL WOOD IN CONTACT WITH CONCRETE SHALL BE P.T. STRUCTURAL PLYWOOD OR DIMENSIONAL LUMBER & COMPATIBLE WITH ALUMINUM.
- MINIMUM SPECIFIC GRAVITY FOR ALL WOOD SHALL BE G = 0.55 (SOUTHERN PINE)
- MASONRY SUBSTRATES SHALL COMPLY WITH ALL APPLICABLE REQUIREMENTS OF ASTM C 90 FOR NORMAL WEIGHT BLOCK WITH A MINIMUM COMPRESSIVE STRENGTH OF 2000 PSI.
- MATERIALS, INCLUDING, BUT NOT LIMITED TO FASTENERS OR SCREWS THAT COME IN CONTACT WITH DISSIMILAR METALS SHALL MEET THE REQUIREMENTS OF FBC CHAPTER 20. ALSO FASTENERS & SCREWS MUST BE COMPATIBLE WITH CHEMICALS USED FOR PRESSURE TREATMENT OF WOOD.
- 30" WIDE AND 80" TALL DOOR PANELS DO NOT COMPLY WITH FAC DOOR CLEARANCE & FBC EGRESS REQUIREMENTS. EGRESS REQUIREMENTS TO BE REVIEWED BY BUILDING OFFICIAL.
- ALL SHIMS TO BE MAX. 1/4", P.T. STRUCTURAL PLYWOOD OR LOAD BEARING PLASTIC & COMPATIBLE W/ ALUMINUM PER FBC.

TITLE: SERIES ALUMINUM SLIDING HP DOOR (HVHZ) (IMPACT)
 ELEVATIONS, PLAN
 VIEWS & GENERAL NOTES

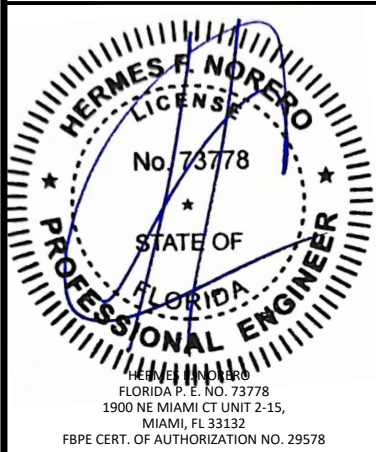
PREPARED BY: BUILDING DROPS, INC.

1900 NE MIAMI CT, SUITE 2-15
 MIAMI, FL 33132
 PH: (954)399-6478
 FAX: (954)744-4738
 WEB: www.buildingdrops.com



REMARKS	BY	DATE
INTERLOCK REVISION	FB	06.24

THE INSTALLATION DETAILS DESCRIBED HEREIN ARE GENERIC AND MAY NOT REFLECT ACTUAL CONDITIONS FOR A SPECIFIC SITE. IF SITE CONDITIONS CAUSE INSTALLATION TO DEVIATE FROM THE REQUIREMENTS DETAILED HEREIN, A LICENSED ENGINEER OR ARCHITECT SHALL PREPARE SITE SPECIFIC DOCUMENTS FOR USE WITH THIS DOCUMENT.

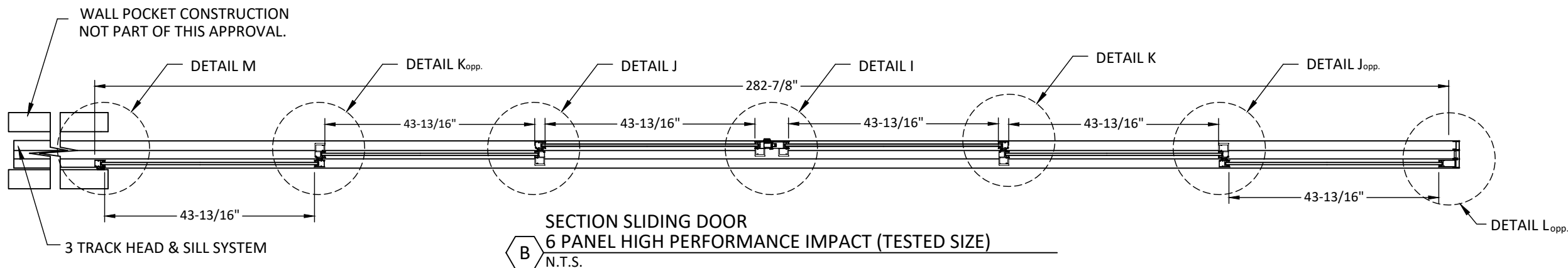


NOTE: SEE SHEETS 7 AND 8 FOR TYPICAL ANCHOR LAYOUT DETAILS
 LEGEND: DESIGNATIONS LABELED "X" AND "O" STAND FOR THE FOLLOWING:
 "X" : OPERABLE
 "O" : FIXED

A EXTERIOR ELEVATION SLIDING DOOR HIGH PERFORMANCE IMPACT (TESTED SIZE)
 N.T.S.

DESIGN PRESSURE RATING	IMPACT RATING
+/- 72.1 PSF*	LARGE AND SMALL MISSILE IMPACT

NOTE: SEE TABLE 1A ON SHEET 10 OF 11 FOR DESIGN PRESSURE RATINGS FOR CONFIGURATIONS USING POCKET JAMBS



B SECTION SLIDING DOOR 6 PANEL HIGH PERFORMANCE IMPACT (TESTED SIZE)
 N.T.S.

FL20662

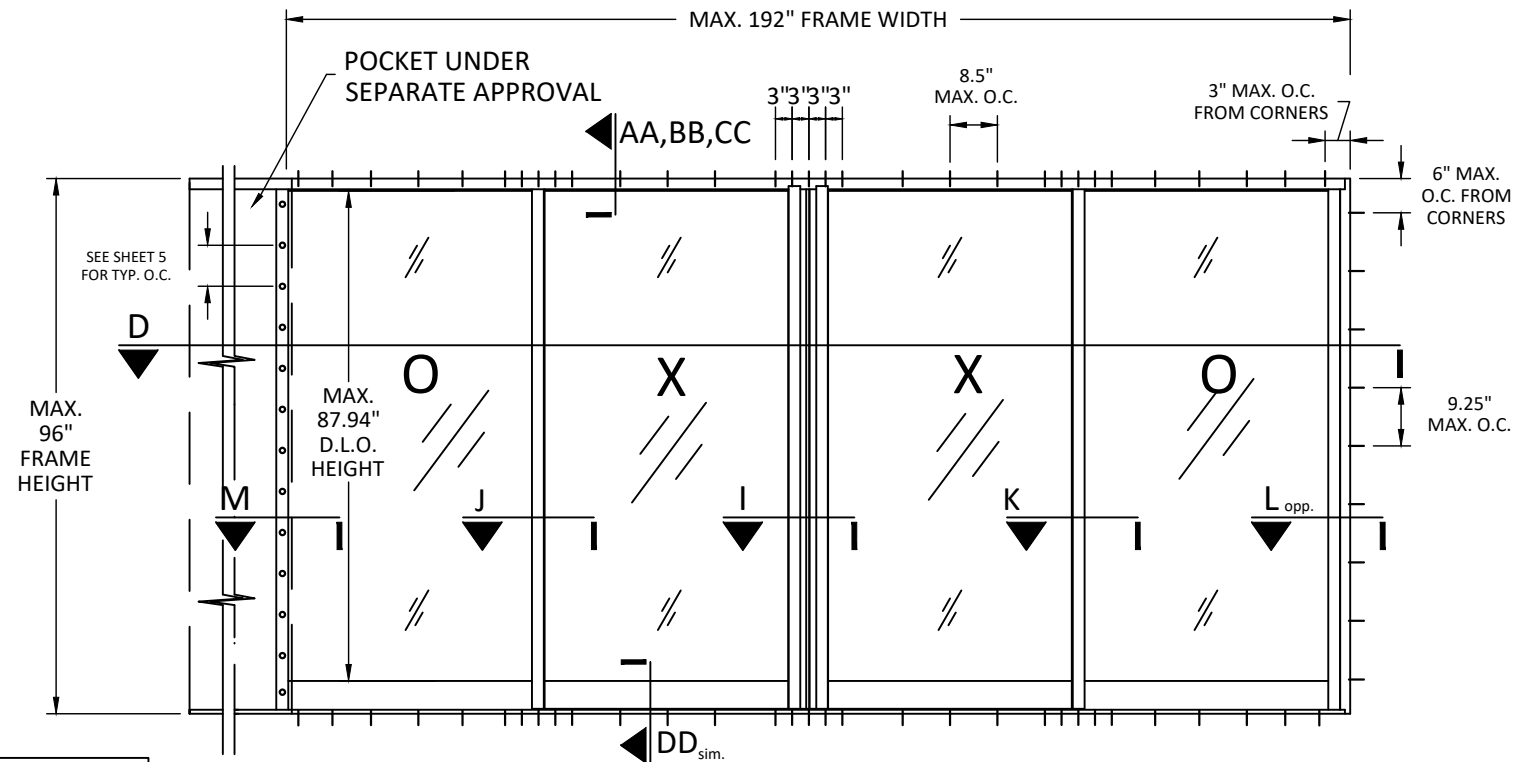
DATE: 10/26/20

DWG. BY: SM
 CHK. BY: HFN

SCALE: NTS

DWG. #: AIR008

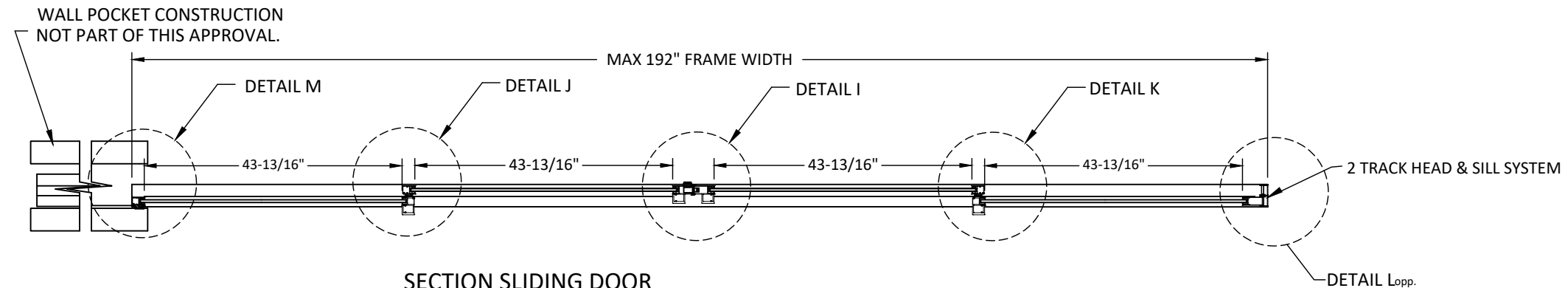
SHEET: OF 11



NOTE: SEE SHEETS 7 AND 8 FOR TYPICAL ANCHOR LAYOUT DETAILS

LEGEND: DESIGNATIONS LABELED "X" AND "O" STAND FOR THE FOLLOWING:
"X" : OPERABLE
"O" : FIXED

C EXTERIOR ELEVATION SLIDING DOOR
HIGH PERFORMANCE IMPACT (TESTED SIZE)
N.T.S.



D SECTION SLIDING DOOR
4 PANEL HIGH PERFORMANCE IMPACT (TESTED SIZE)
N.T.S.

DESIGN PRESSURE RATING	IMPACT RATING
+/- 72.1 PSF*	LARGE AND SMALL MISSILE IMPACT

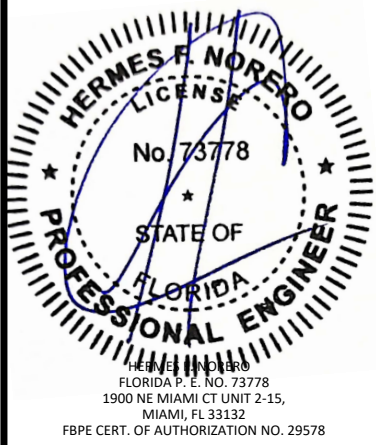
NOTE: SEE TABLE 1A ON SHEET 10 OF 11 FOR DESIGN PRESSURE RATINGS FOR CONFIGURATIONS USING POCKET JAMBS

TITLE: SERIES ALUMINUM SLIDING HP DOOR (HVHZ) (IMPACT)
ELEVATION & PLAN VIEW

PREPARED BY:
B.D. BUILDING DROPS
BUILDING DROPS, INC.
1900 NE MIAMI CT, SUITE 2-15
MIAMI, FL 33132
PH: (954)399-6478
FAX: (954)744-4738
WEB: www.buildingdrops.com

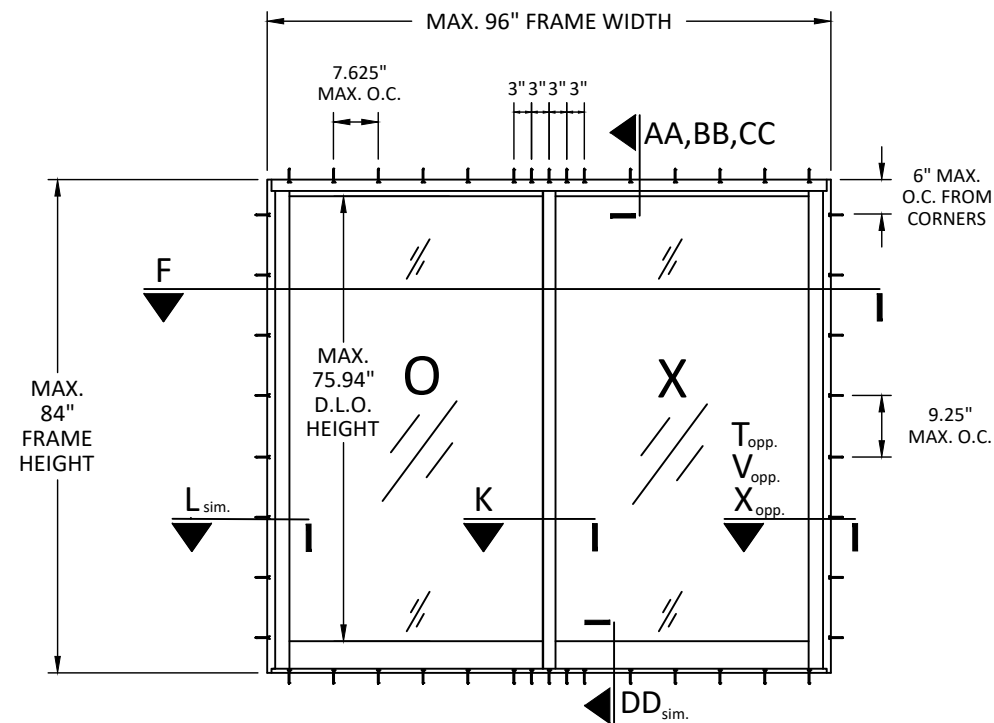
REMARKS	BY	DATE
INTERLOCK REVISION	FB	06.24

THE INSTALLATION DETAILS DESCRIBED HEREIN ARE GENERIC AND MAY NOT REFLECT ACTUAL CONDITIONS FOR A SPECIFIC SITE. IF SITE CONDITIONS CAUSE INSTALLATION TO DEVIATE FROM THE REQUIREMENTS DETAILED HEREIN, A LICENSED ENGINEER OR ARCHITECT SHALL PREPARE SITE SPECIFIC DOCUMENTS FOR USE WITH THIS DOCUMENT.



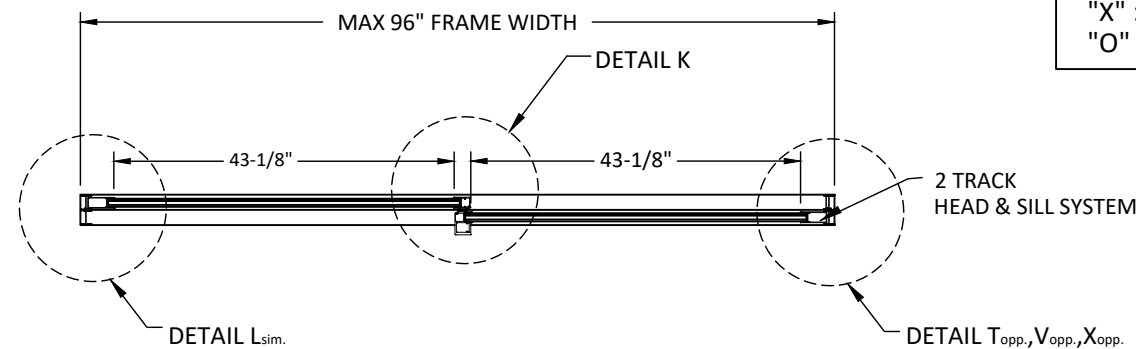
FL20662

DATE:	10/26/20
DWG. BY:	SM
CHK. BY:	HFN
SCALE:	NTS
DWG. #:	AIR008
SHEET:	OF 11



**EXTERIOR ELEVATION SLIDING DOOR
HIGH PERFORMANCE IMPACT (TESTED SIZE)**

E N.T.S.



**SECTION SLIDING DOOR
2 PANEL HIGH PERFORMANCE IMPACT (TESTED SIZE)**

F N.T.S.

DESIGN PRESSURE RATING	IMPACT RATING
+/- 72.1 PSF*	LARGE AND SMALL MISSILE IMPACT

NOTE: SEE TABLE 1A ON SHEET 10 OF 11 FOR DESIGN PRESSURE RATINGS FOR CONFIGURATIONS USING POCKET JAMBS

NOTE: SEE SHEETS 7 AND 8 FOR TYPICAL ANCHOR LAYOUT DETAILS

LEGEND: DESIGNATIONS LABELED "X" AND "O" STAND FOR THE FOLLOWING:
"X" : OPERABLE
"O" : FIXED

TITLE:
SERIES ALUMINUM SLIDING HP DOOR
(HVHZ) (IMPACT)
ELEVATION & PLAN VIEW

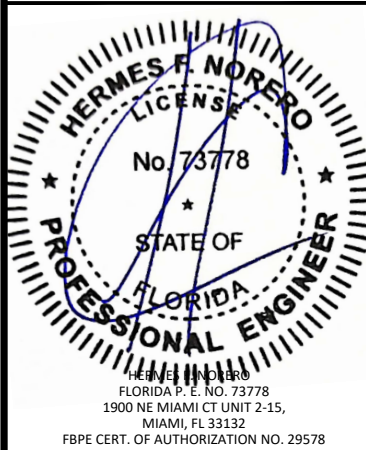
PREPARED BY:
BUILDING DROPS, INC.

1900 NE MIAMI CT, SUITE 2-15
MIAMI, FL 33132
PH: (954)399-6478
FAX: (954)744-4738
WEB: www.buildingdrops.com



REMARKS	BY	DATE
INTERLOCK REVISION	FB	06.24

THE INSTALLATION DETAILS DESCRIBED HEREIN ARE GENERIC AND MAY NOT REFLECT ACTUAL CONDITIONS FOR A SPECIFIC SITE. IF SITE CONDITIONS CAUSE INSTALLATION TO DEVIATE FROM THE REQUIREMENTS DETAILED HEREIN, A LICENSED ENGINEER OR ARCHITECT SHALL PREPARE SITE SPECIFIC DOCUMENTS FOR USE WITH THIS DOCUMENT.



FL20662

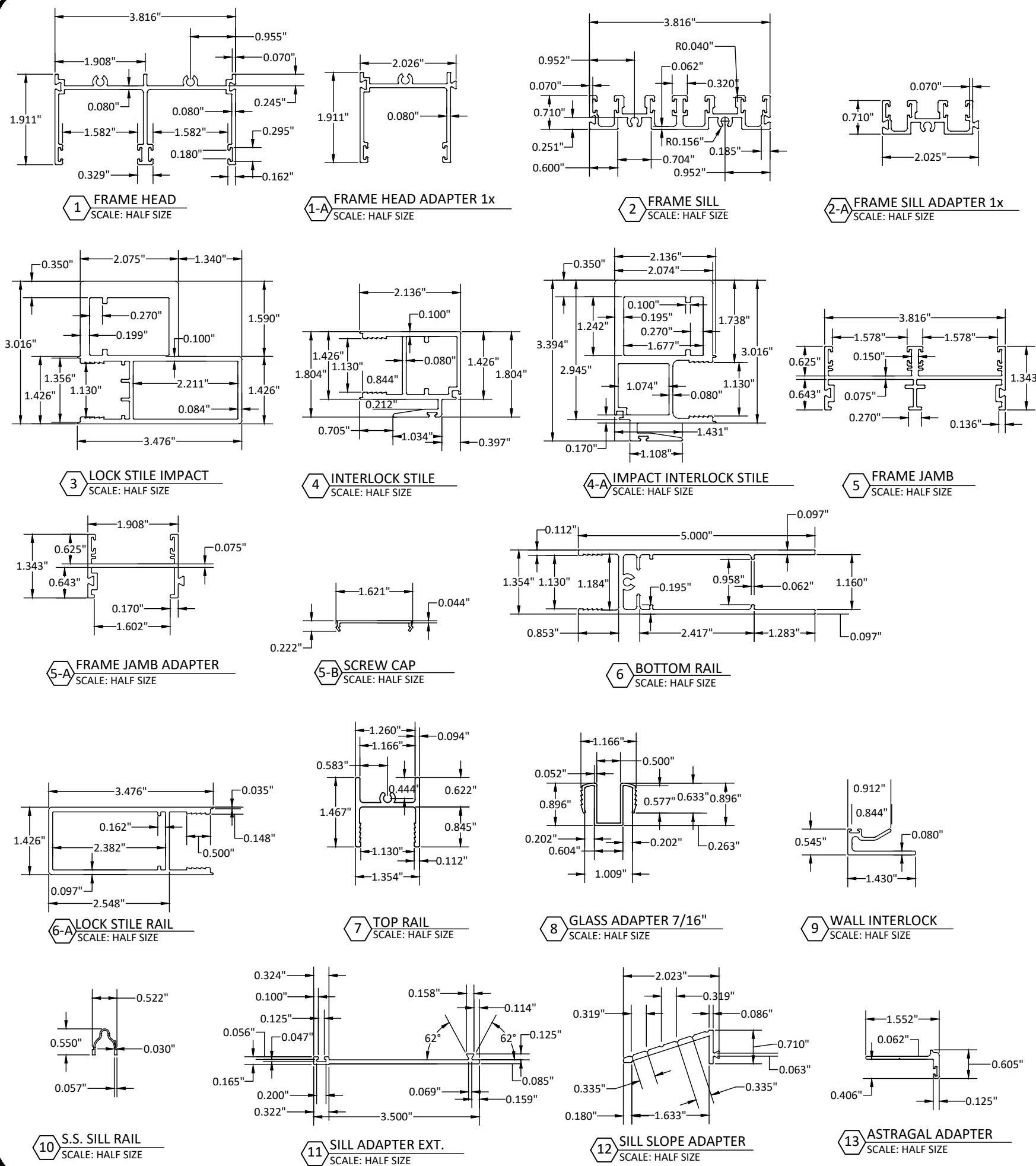
DATE: 10/26/20

DWG. BY: SM
CHK. BY: HFN

SCALE: NTS

DWG. #: AIR008

SHEET: OF 11



BILL OF MATERIALS			
ITEM #	PART #	ITEM DESCRIPTION	MANUFACTURER / SUPPLIER / NOTES
PARTS & EXTRUSIONS			
1	80600	FRAME HEAD	FUNDICIONES INDUSTRIALES S.A. / 6063-T5
1-A	80601	FRAME HEAD ADAPTER 1x	FUNDICIONES INDUSTRIALES S.A. / 6063-T5
2	80602	FRAME SILL	FUNDICIONES INDUSTRIALES S.A. / 6063-T5
2-A	80603	FRAME SILL ADAPTER 1x	FUNDICIONES INDUSTRIALES S.A. / 6063-T5
3	80611	LOCK STILE IMPACT	FUNDICIONES INDUSTRIALES S.A. / 6063-T5
4	80610	INTERLOCK STILE	FUNDICIONES INDUSTRIALES S.A. / 6063-T5
4-A	80612	IMPACT INTERLOCK STILE	FUNDICIONES INDUSTRIALES S.A. / 6063-T5
5	80605	JAMB	FUNDICIONES INDUSTRIALES S.A. / 6063-T5
5-A	80606	JAMB ADAPTER SILL	FUNDICIONES INDUSTRIALES S.A. / 6063-T5
5-B	80615	SCREW CAP	FUNDICIONES INDUSTRIALES S.A. / 6063-T5
6	80608	BOTTOM RAIL	FUNDICIONES INDUSTRIALES S.A. / 6063-T5
6-A	80630	LOCK STILE RAIL	FUNDICIONES INDUSTRIALES S.A. / 6063-T5
7	80607	TOP RAIL	FUNDICIONES INDUSTRIALES S.A. / 6063-T5
8	80614	GLASS ADAPTER 7/16"	FUNDICIONES INDUSTRIALES S.A. / 6063-T5
9	22046	WALL INTERLOCK	FUNDICIONES INDUSTRIALES S.A. / 6063-T5
10	80627	S.S. TRACK RAIL/SILL	DELTA INDUSTRIAL / S/S / 6063-T5
11	80631	TRACK ADAPTER EXTERIOR	FUNDICIONES INDUSTRIALES S.A. / 6063-T5
12	80604	SLOPE ADAPTER/SILL	FUNDICIONES INDUSTRIALES S.A. / 6063-T5
13	80616	ASTRAGAL ADAPTER	FUNDICIONES INDUSTRIALES S.A. / 6063-T5
SEALS & SEALANTS			
14	22438	WEATHERSTRIP INTERLOCK	ULTRAFAB INC.
15	96933	RUBBER 238	MSW LLC
16	96825	WEATHERSTRIP FRAME	ULTRAFAB INC.
17	53580	995 STRUCTURAL SILICONE BLACK	DOW CORNING
18	96911	OVAL RUBBER BUMPER	DELTA INDUSTRIAL / S/S
19	96910	RUBBER BUTTON BUMPER	DELTA INDUSTRIAL / S/S
20	96900	RUBBER BUMPER BLACK P-E304-J1-E 435	HO-PRODUCTS CORP.
21	96823	WEATHERSTRIP	ULTRAFAB INC.
GLASS			
22	7/16"	IMPACT GLASS	3/16" ANNEALED GLASS 0.090" SAFLEX CP - SAFLEX OR SAFLEX HP COMPOSITE GLASS INTERLAYERS WITH PET CORE BY EASTMAN CHEMICAL CO.
33	1-1/16"	IMPACT GLASS	3/16" ANNEALED GLASS 3/16" TEMPERED GLASS (EXT.) AIR SPACE 3/16" ANNEALED GLASS 0.090" SAFLEX CP - SAFLEX OR SAFLEX HP COMPOSITE GLASS INTERLAYERS WITH PET CORE BY EASTMAN CHEMICAL CO.
33A	1-1/16"	IMPACT GLASS	3/16" ANNEALED GLASS 1/4" TEMPERED GLASS (EXT.) AIR SPACE 3/16" ANNEALED GLASS 0.090" SAFLEX CP - SAFLEX OR SAFLEX HP COMPOSITE GLASS INTERLAYERS WITH PET CORE BY EASTMAN CHEMICAL CO.
34		ALUMINUM I.G. SPACER	3/16" ANNEALED GLASS HELIUMA USA
FASTENERS			
23	95806	SCR 20*1" F/H S.S. PHI	LA CASA DE LOS TORNILLOS
24	95586	SCR 10*2" PHI P/H S.S. T-A	LA CASA DE LOS TORNILLOS
25	95606	SCR 1/4"-20*5/8" P/H SS PHI	LA CASA DE LOS TORNILLOS
26	95543	SCR 10*1" P/H SS PHI T-A SMS	LA CASA DE LOS TORNILLOS
HARDWARE			
27	34124	MORTISE LOCK	DELTA INDUSTRIAL
28	34132	HANDLE SET	ROTO FASCO
29	80100	STAINLESS STEEL MAXI TANDEM ROLLER	DELTA INDUSTRIAL
30	33581	KEY CILINDER	ALL TOOLS, INC.

AIR MASTER
windows and doors

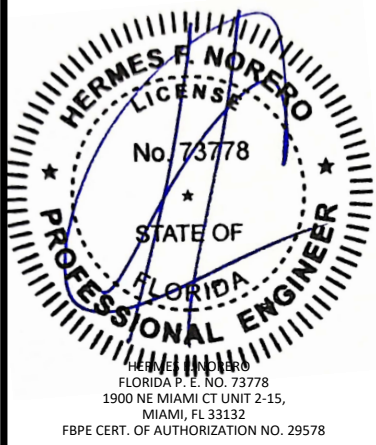
P.O. BOX 2097
BARCELONETA, PR 00617
WWW.AIRMASTERPR.COM
PH: (787)846-2110
FAX: (787)623-0085

TITLE: **SERIES ALUMINUM SLIDING HP DOOR (HVHZ) (IMPACT)**
COMPONENTS AND B.O.M.

PREPARED BY: **B.D. BUILDING DROPS**
1900 NE MIAMI CT, SUITE 2-15
MIAMI, FL 33132
PH: (954)399-6478
FAX: (954)744-4738
WEB: www.buildingdrops.com

REMARKS	BY	DATE
INTERLOCK REVISION	FB	06.24

THE INSTALLATION DETAILS DESCRIBED HEREIN ARE GENERIC AND MAY NOT REFLECT ACTUAL CONDITIONS FOR A SPECIFIC SITE. IF SITE CONDITIONS CAUSE INSTALLATION TO DEVIATE FROM THE REQUIREMENTS DETAILED HEREIN, A LICENSED ENGINEER OR ARCHITECT SHALL PREPARE SITE SPECIFIC DOCUMENTS FOR USE WITH THIS DOCUMENT.



FL20662

DATE: 10/26/20

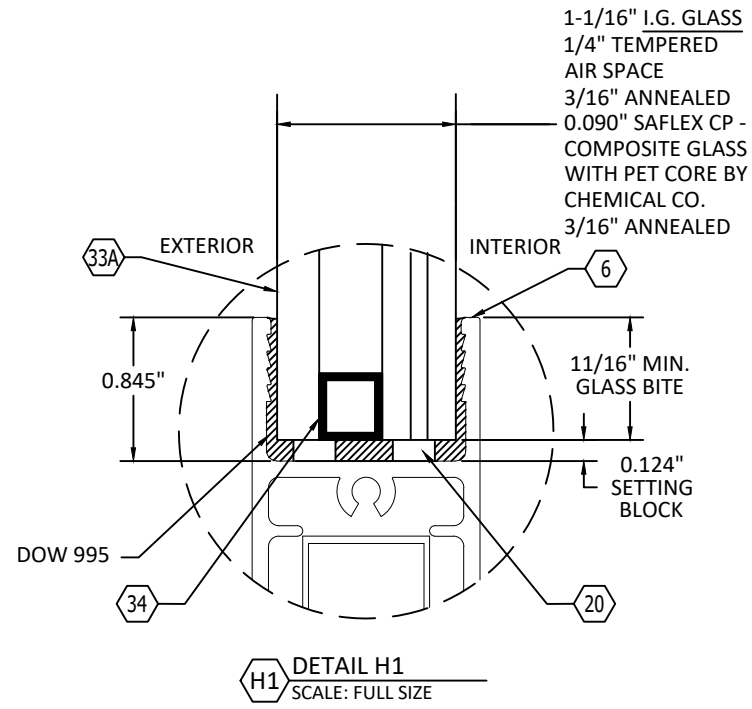
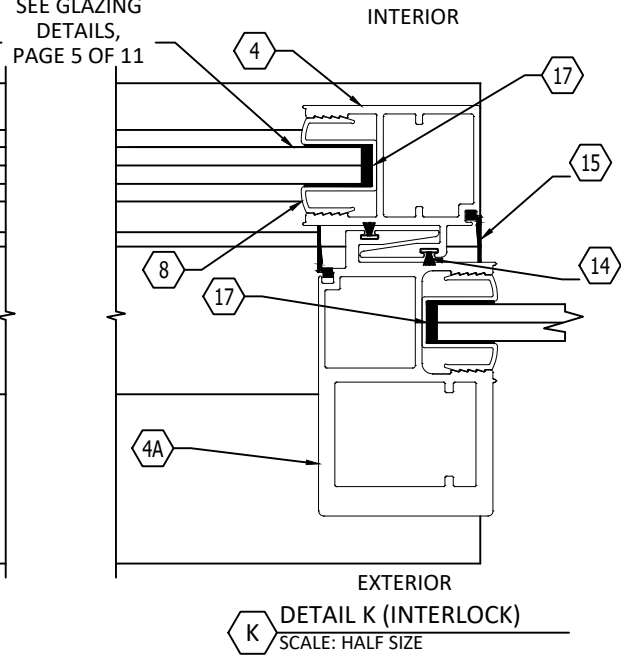
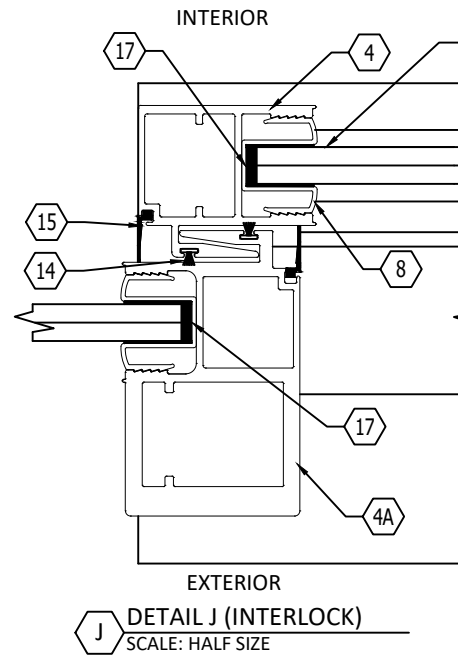
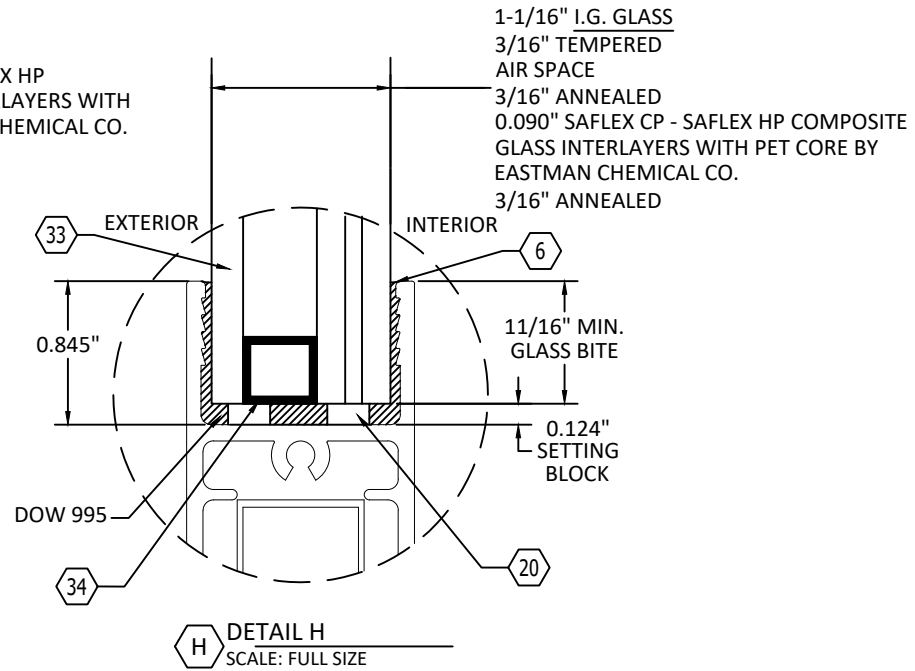
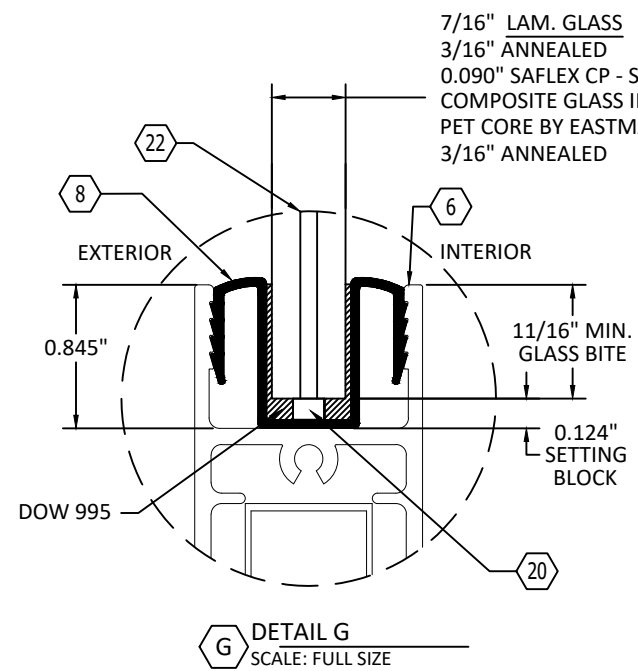
DWG. BY: SM CHK. BY: HFN

SCALE: NTS

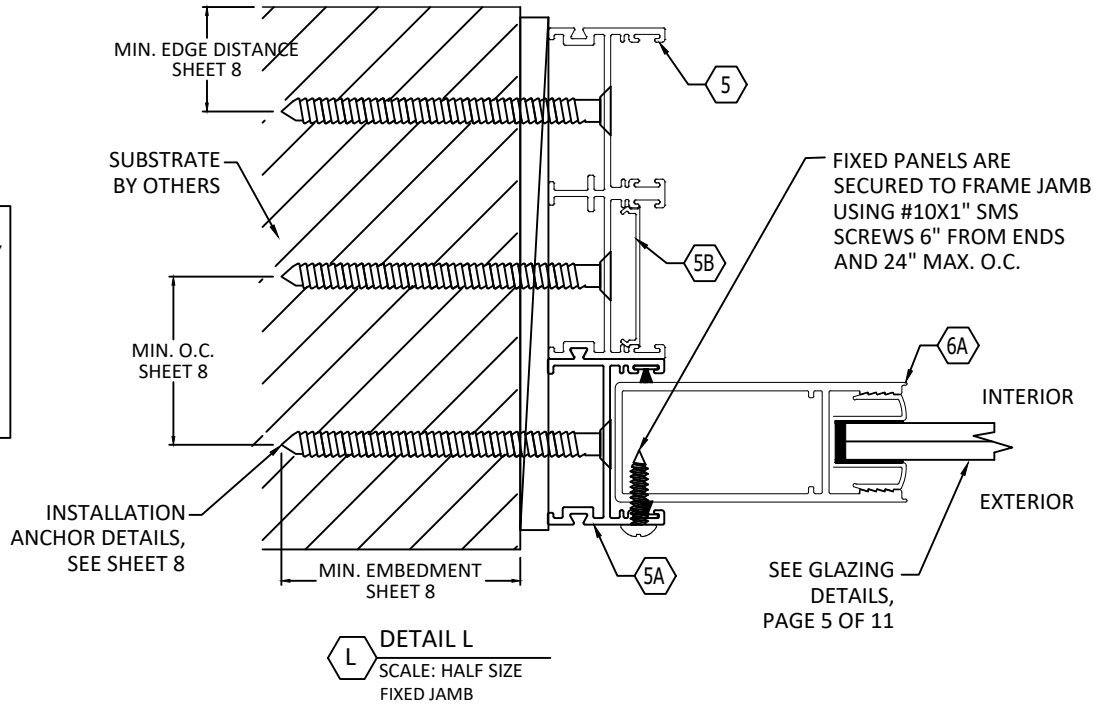
DWG. #: AIR008

SHEET: OF 11

4



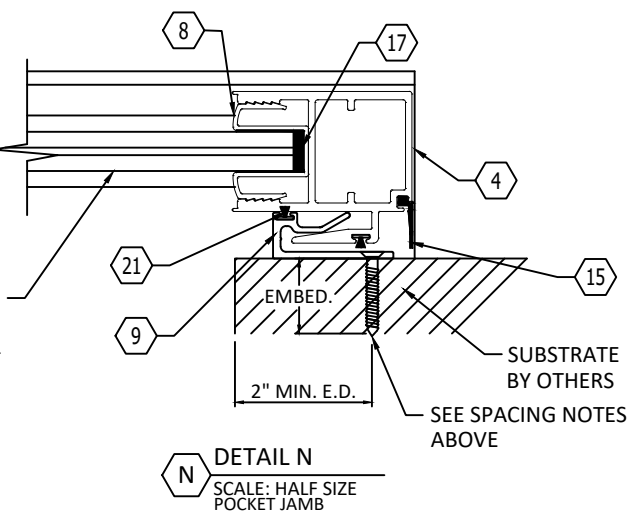
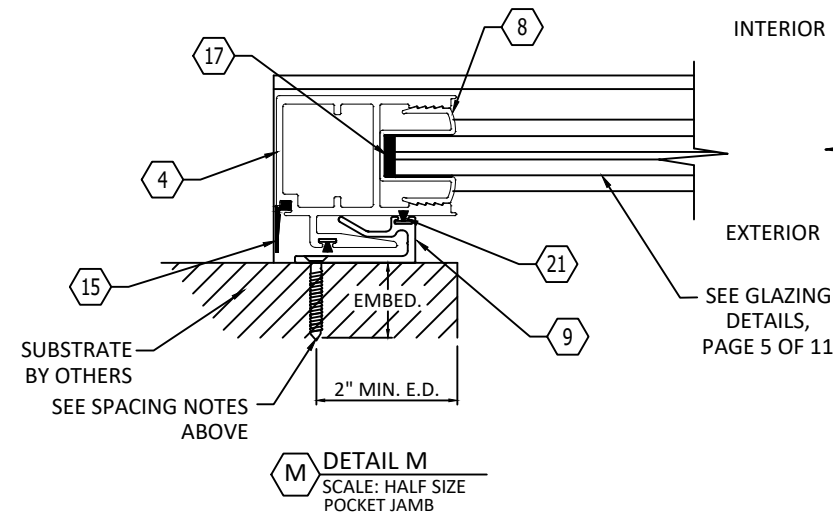
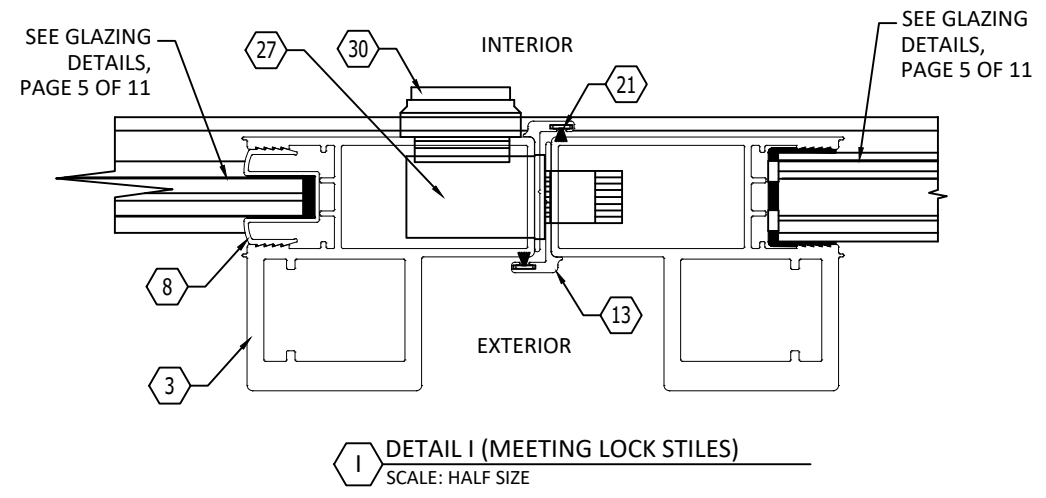
NOTE: GLASS TYPES H & H1 MAY ONLY BE USED ON PANELS WITH A MAXIMUM D.L.O. AREA OF 22.7 SQ. FT.



POCKET JAMB ANCHORS

ANCHOR DETAILS & SPACING NOTES:
ALL ANCHOR TYPES ARE TO BE INSTALLED AT 3" FROM CORNERS AND 6" MAX. O.C., ALLOWABLE ANCHOR TYPES:

- 1/4" DEWALT ULTRACON+ IN GROUT FILLED CMU W/ 1" MIN. EMBEDMENT
- 1/4" DEWALT ULTRACON+ IN CONCRETE W/ 1" MIN. EMBEDMENT
- #12 WOOD SCREW @ 7-1/4" O.C. IN WOOD W/ 1/2" EMBEDMENT.
- #12 GR. 5 SMS IN STEEL W/ 3 THREADS PENETRATION BEYOND STEEL
- #12 GR. 5 SMS IN ALUMINUM W/ 3 THREADS PENETRATION BEYOND ALUM.



AIR MASTER
windows and doors

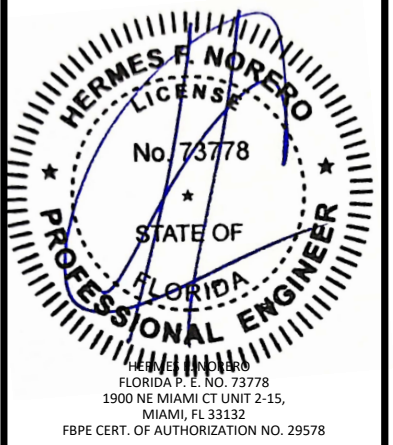
P.O. BOX 2097
BARCELONETA, PR 00617
WWW.AIRMASTERPR.COM
PH: (787)846-2110
FAX: (787)623-0085

TITLE: SERIES ALUMINUM SLIDING HP DOOR (HVHZ) (IMPACT)
INSTALLATION DETAILS AND GLAZING DETAILS

PREPARED BY: BUILDING DROPS, INC.
1900 NE MIAMI CT, SUITE 2-15
MIAMI, FL 33132
PH: (954)399-6478
FAX: (954)744-4738
WEB: www.buildingdrops.com

REMARKS	BY	DATE
INTERLOCK REVISION	FB	06.24

THE INSTALLATION DETAILS DESCRIBED HEREIN ARE GENERIC AND MAY NOT REFLECT ACTUAL CONDITIONS FOR A SPECIFIC SITE. IF SITE CONDITIONS CAUSE INSTALLATION TO DEVIATE FROM THE REQUIREMENTS DETAILED HEREIN, A LICENSED ENGINEER OR ARCHITECT SHALL PREPARE SITE SPECIFIC DOCUMENTS FOR USE WITH THIS DOCUMENT.



FL20662

DATE: 10/26/20

DWG. BY: SM CHK. BY: HFN

SCALE: NTS

DWG. #: AIR008

SHEET: OF 11

5

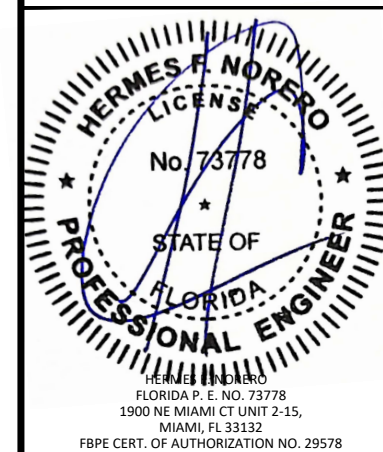
TITLE:
SERIES ALUMINUM SLIDING HP DOOR
(HVHZ) (IMPACT)
HARDWARE DETAILS

PREPARED BY:
BD
BUILDING DROPS

BUILDING DROPS, INC.
1900 NE MIAMI CT. SUITE 2-15
MIAMI, FL 33132
PH: (954)399-8478
FAX: (954)744-4738
WEB: www.buildingdrops.com

REMARKS	BY	DATE
INTERLOCK REVISION	FB	06.24

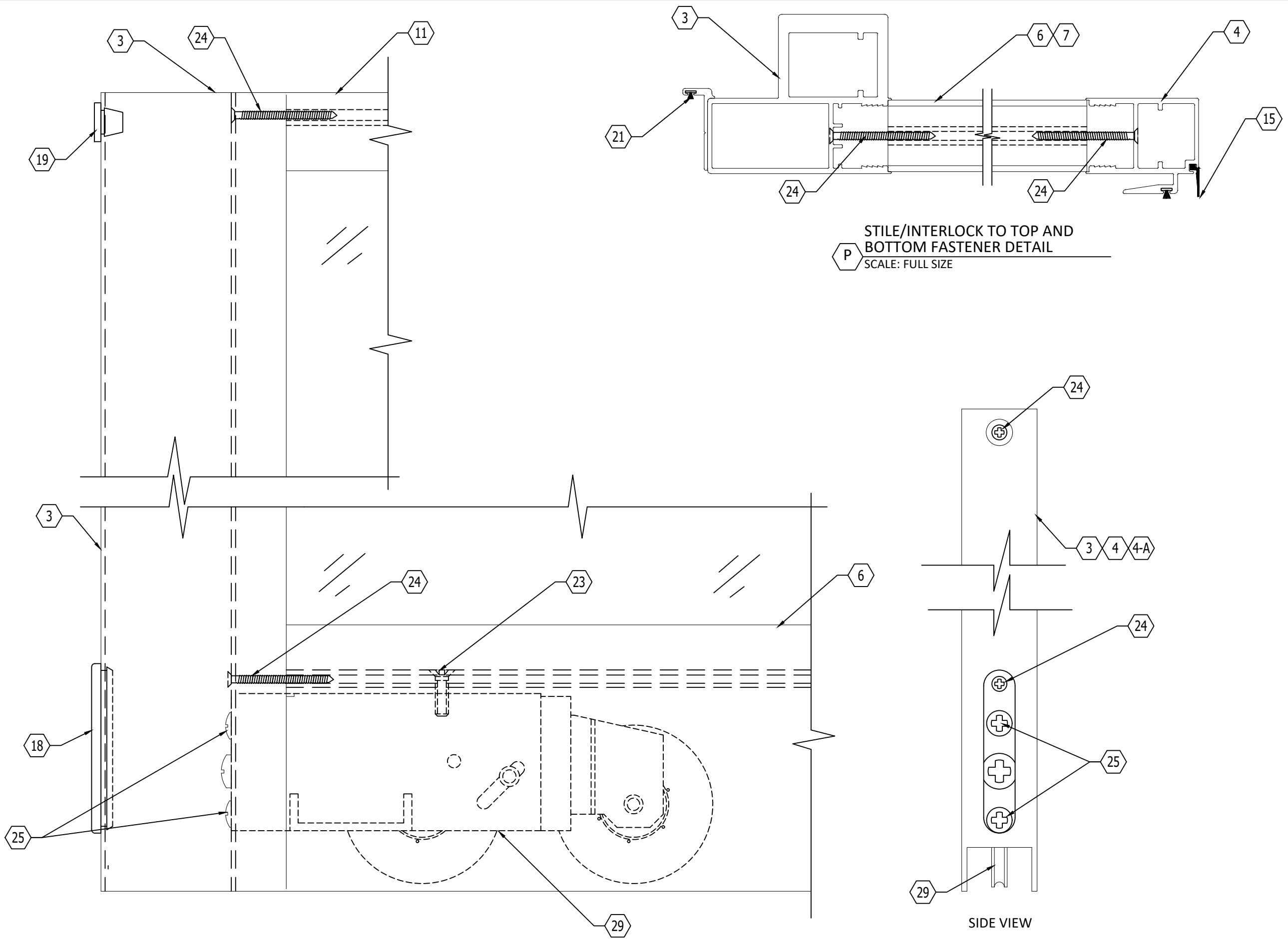
THE INSTALLATION DETAILS DESCRIBED HEREIN ARE GENERIC AND MAY NOT REFLECT ACTUAL CONDITIONS FOR A SPECIFIC SITE. IF SITE CONDITIONS CAUSE INSTALLATION TO DEVIATE FROM THE REQUIREMENTS DETAILED HEREIN, A LICENSED ENGINEER OR ARCHITECT SHALL PREPARE SITE SPECIFIC DOCUMENTS FOR USE WITH THIS DOCUMENT.



FL20662

DATE:	10/26/20
DWG. BY:	SM
CHK. BY:	HFN
SCALE:	NTS
DWG. #:	AIR008
SHEET:	OF 11

6



O SS TANDEM ROLLERS ANCHOR DETAIL
SCALE: FULL SIZE

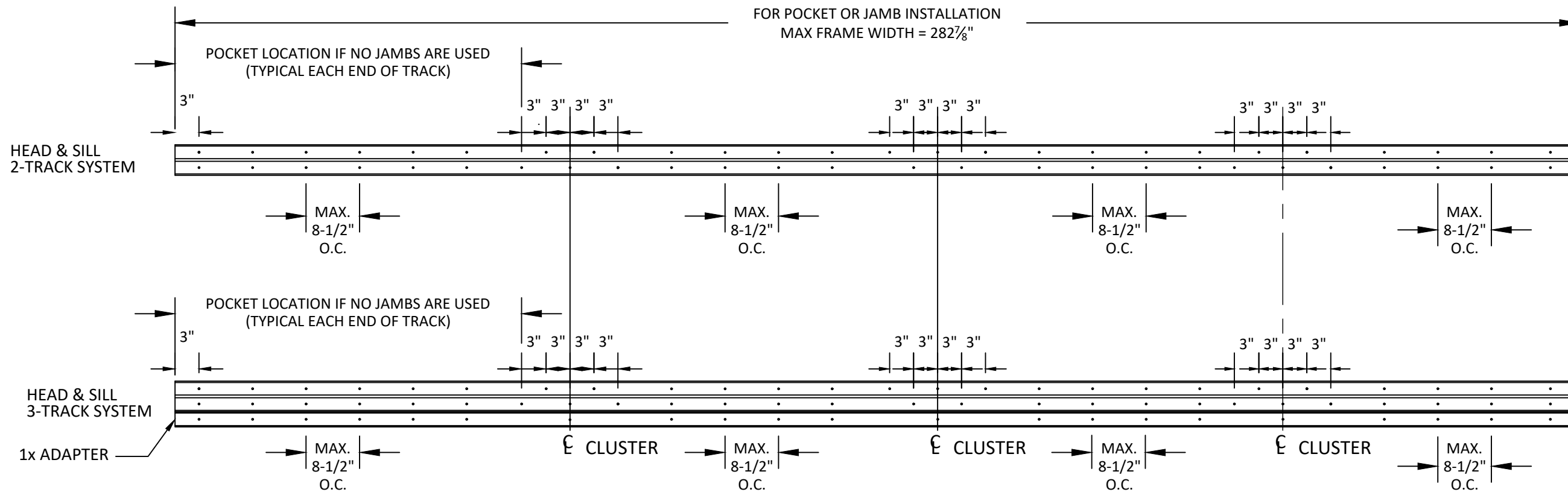
Q S.S. TANDEM ROLLERS ANCHOR DETAIL
SCALE: FULL SIZE

c:\users\Franciscobriceno\building drops, inc.\building drops\landing - common\projects\air master\windows & doors\fbce-24-0210 - fbc submittal - hp sliding door - wall interlock revisions\1306023.dwg, air008.dwg

TITLE: SERIES ALUMINUM SLIDING HP DOOR (HVHZ) (IMPACT) ANCHOR LAYOUTS

PREPARED BY: BUILDING DROPS, INC.

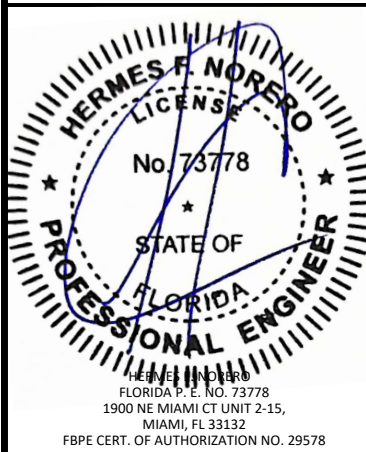
1900 NE MIAMI CT, SUITE 2-15
MIAMI, FL 33132
PH: (954)959-8478
FAX: (954)744-4738
WEB: www.buildingdrops.com



R TYPICAL HEAD & SILL ANCHOR LOCATIONS
N.T.S.

REMARKS	BY	DATE
INTERLOCK REVISION	FB	06.24

THE INSTALLATION DETAILS DESCRIBED HEREIN ARE GENERIC AND MAY NOT REFLECT ACTUAL CONDITIONS FOR A SPECIFIC SITE. IF SITE CONDITIONS CAUSE INSTALLATION TO DEVIATE FROM THE REQUIREMENTS DETAILED HEREIN, A LICENSED ENGINEER OR ARCHITECT SHALL PREPARE SITE SPECIFIC DOCUMENTS FOR USE WITH THIS DOCUMENT.



FL20662

DATE: 10/26/20

DWG. BY: SM
CHK. BY: HFN

SCALE: NTS

DWG. #: AIR008

SHEET: OF 11

c:\Users\franciscobriceno\building_drops, inc\building_drops, inc\projects\air master windows & doors\fb-24-0210 - fb-24-0210 - hp submital - hp sliding door - wall interlock revision\120602.dwg

ANCHOR SCHEDULE:

FRAME HEAD:

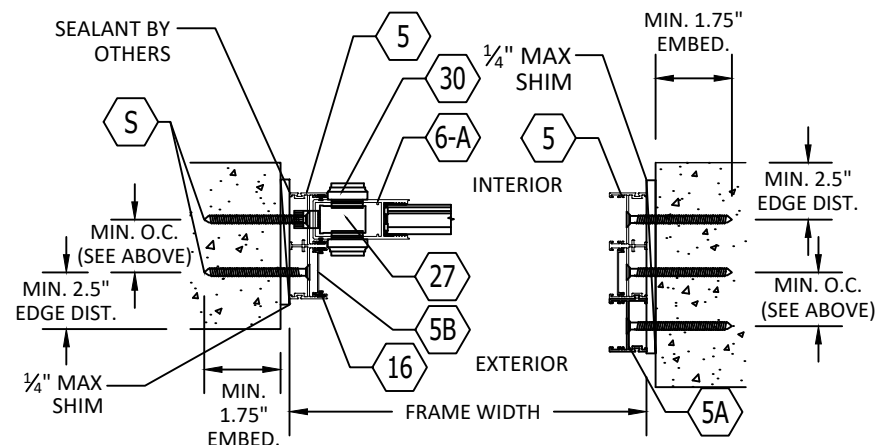
- A. 1/4" DIAMETER DEWALT ULTRACON+ (0.363" HEAD SIZE) THROUGH 1/4" MAX. NON-COMPRESSIBLE SHIMS INTO >= 2,846 PSI CONCRETE WITH 2 1/2" EDGE DISTANCE, MIN. 1 1/2" SPACING & 1 3/4" EMBEDMENT (Fy=155 ksi, Fu=177 ksi)
- B. #12 GRADE 5 WOOD SCREW WITH 1 1/4" EDGE DISTANCE, 1 1/4" MINIMUM SPACING AND 1 1/2" PENETRATION IN SG=0.55 WOOD
- C. #12 GRADE 5 TEK SCREW OR SMS INTO METAL STRUCTURE WITH MIN. 1" EDGE DISTANCE, 1 1/4" MIN. SPACING, & MIN. 3 THREADS PENETRATION BEYOND METAL
 - a. 6063-T5 ALUMINUM ALLOY, MINIMUM 0.125" THICK
 - b. 36 KSI STEEL, MINIMUM 12 GA-USE G-90 GALVANIZED STEEL OR PAINTED STEEL-SEE FBC DISSIMILAR METAL REQUIREMENTS

FRAME SILL:

- A. 1/4" DIAMETER DEWALT ULTRACON+ (0.363" HEAD SIZE) THROUGH 1/4" MAX. NON-COMPRESSIBLE SHIMS INTO >= 2,846 PSI CONCRETE WITH 2 1/2" EDGE DISTANCE, MIN. 1 1/2" SPACING & 1 3/4" EMBEDMENT (Fy=155 ksi, Fu=177 ksi)
- B. #12 GRADE 5 WOOD SCREW WITH 1 1/4" EDGE DISTANCE, 1 1/4" MINIMUM SPACING AND 1 1/2" PENETRATION IN SG=0.55 WOOD

FRAME JAMB:

- A. 1/4" DIAMETER DEWALT ULTRACON+ (0.363" HEAD SIZE) THROUGH 1/4" MAX. NON-COMPRESSIBLE SHIMS INTO >= 2,846 PSI CONCRETE WITH 2 1/2" EDGE DISTANCE, MIN. 1 1/2" SPACING & 1 3/4" EMBEDMENT (Fy=155 ksi, Fu=177 ksi)
- B. 1/4" DIAMETER DEWALT ULTRACON+ (0.363" HEAD SIZE) THROUGH 1/4" MAX. NON-COMPRESSIBLE SHIMS INTO GROUT FILLED CMU WITH 2-1/2" EDGE DISTANCE, MIN. SPACING =4" (ANCHOR LOCATIONS MAY BE STAGGERED TO ACHIEVE MIN SPACING) & MIN. EMBEDMENT = 1 3/4" (Fy=155 ksi, Fu=177 ksi)
- A. MASONRY SUBSTRATES SHALL COMPLY WITH ALL APPLICABLE REQUIREMENTS OF ASTM C 90 FOR NORMAL WEIGHT BLOCK WITH A MINIMUM COMPRESSIVE STRENGTH OF 2000 PSI.
- C. #12 GRADE 5 WOOD SCREW WITH 1 1/4" EDGE DISTANCE, 1 1/4" MINIMUM SPACING AND 1 1/2" PENETRATION IN SG=0.55 WOOD
- D. #12 GRADE 5 TEK SCREW OR SMS INTO METAL STRUCTURE WITH MIN. 1" EDGE DISTANCE, 1 1/4" MIN. SPACING, & MIN. 3 THREADS PENETRATION BEYOND METAL
 - A. 6063-T5 ALUMINUM ALLOY, MINIMUM 0.125" THICK
 - B. 36 KSI STEEL, MINIMUM 12 GA-USE G-90 GALVANIZED STEEL OR PAINTED STEEL-SEE FBC DISSIMILAR METAL REQUIREMENTS

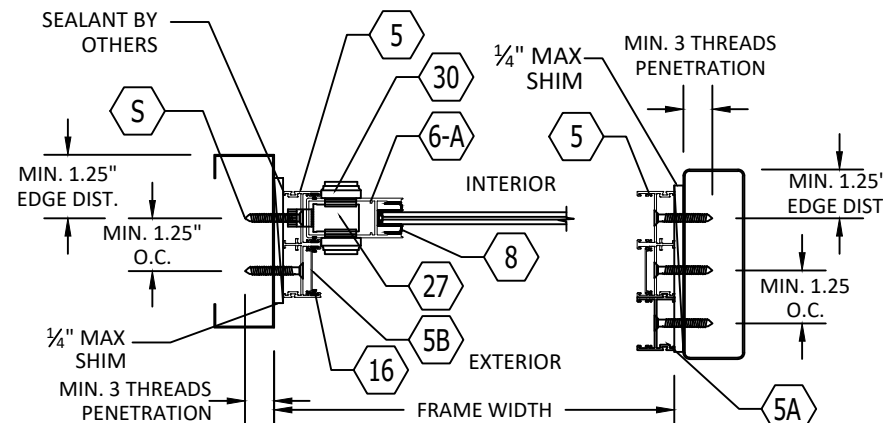


2-TRACK JAMB DETAIL T

SCALE: HALF SIZE
(CONCRETE OR GROUT FILLED CMU)
FRAME JAMB ANCHOR PER DETAIL

3-TRACK JAMB DETAIL U

SCALE: HALF SIZE
(CONCRETE OR GROUT FILLED CMU)



2-TRACK JAMB DETAIL X

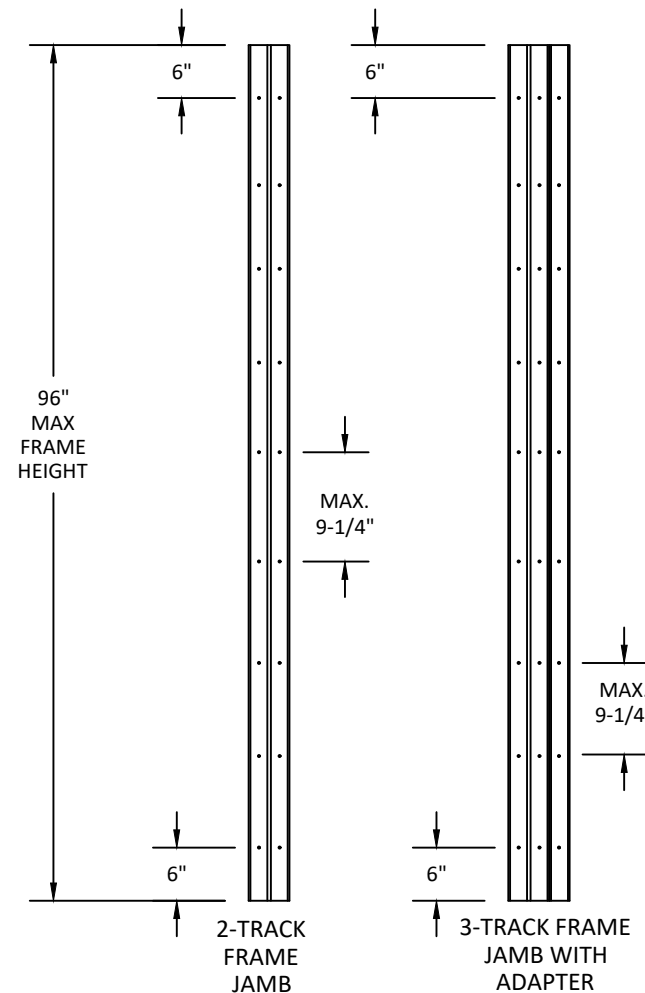
SCALE: HALF SIZE
(STEEL OR ALUM. FRAME)
FRAME JAMB ANCHOR PER DETAIL

3-TRACK JAMB DETAIL Y

SCALE: HALF SIZE
(STEEL OR ALUM. FRAME)

NOTE:

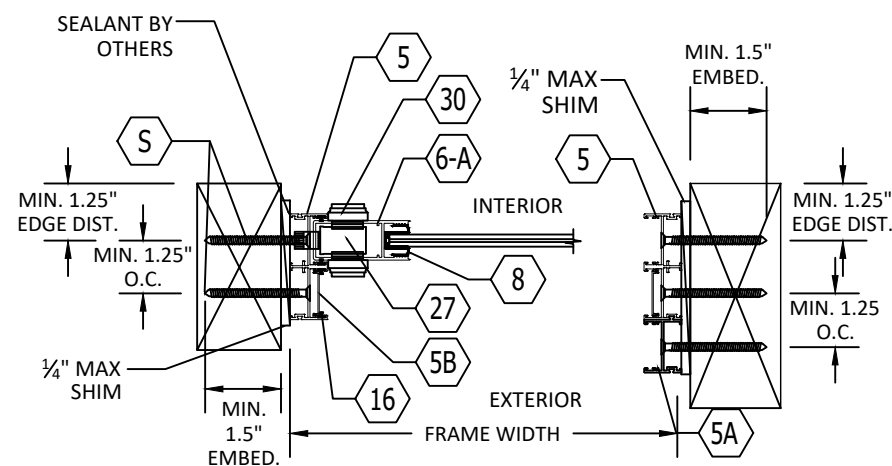
1. ALL DEWALT ULTRACONS ARE TO BE COATED WITH STALGARD.
2. ALL DEWALT ULTRACONS AND WOOD SCREWS ARE TO BE PHILLIPS, FLAT HEAD
3. NON-COMPRESSIBLE SHIMS WITH A MAXIMUM THICKNESS OF 1/4" MAY BE USED BETWEEN THE FRAME AND THE SUBSTRATE.



2-TRACK FRAME JAMB & 3-TRACK FRAME WITH JAMB ADAPTER 1X INSTALLATION SCREW HOLES LOCATION DETAIL
N.T.S.

NOTE:

1. FRAME JAMB & FRAME JAMB ADAPTER SPACING SHOWN IS SUITABLE FOR STEEL, ALUMINUM, WOOD, CONCRETE, AND GROUT FILLED CMU SUBSTRATES.



2-TRACK JAMB DETAIL V

SCALE: HALF SIZE
(2X WOOD FRAME)
FRAME JAMB ANCHOR PER DETAIL

3-TRACK JAMB DETAIL W

SCALE: HALF SIZE
(2X WOOD FRAME)

TITLE: SERIES ALUMINUM SLIDING HP DOOR (HVHZ) (IMPACT)

ANCHOR SCHEDULE AND LAYOUTS & JAMB DETAILS

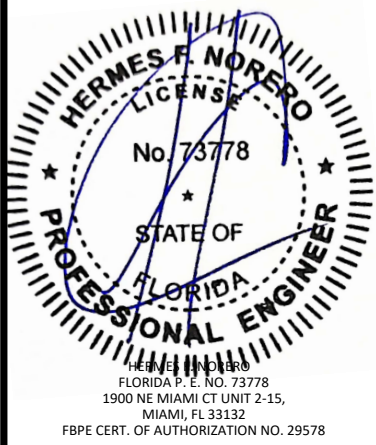
PREPARED BY: BUILDING DROPS, INC.

1900 NE MIAMI CT, SUITE 2-15
MIAMI, FL 33132
PH: (954)999-6478
FAX: (954)744-4738
WEB: www.buildingdrops.com



REMARKS	BY	DATE
INTERLOCK REVISION	FB	06.24

THE INSTALLATION DETAILS DESCRIBED HEREIN ARE GENERIC AND MAY NOT REFLECT ACTUAL CONDITIONS FOR A SPECIFIC SITE. IF SITE CONDITIONS CAUSE INSTALLATION TO DEVIATE FROM THE REQUIREMENTS DETAILED HEREIN, A LICENSED ENGINEER OR ARCHITECT SHALL PREPARE SITE SPECIFIC DOCUMENTS FOR USE WITH THIS DOCUMENT.



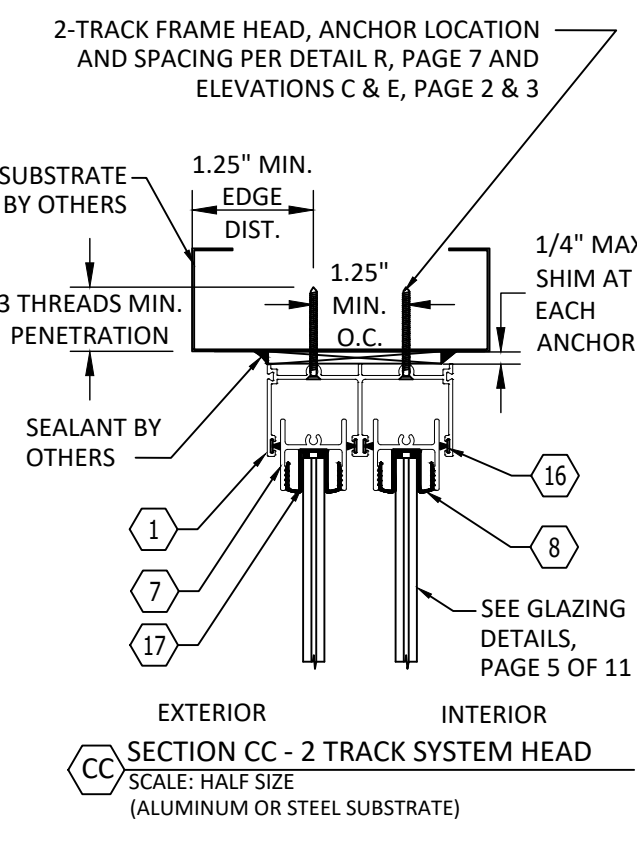
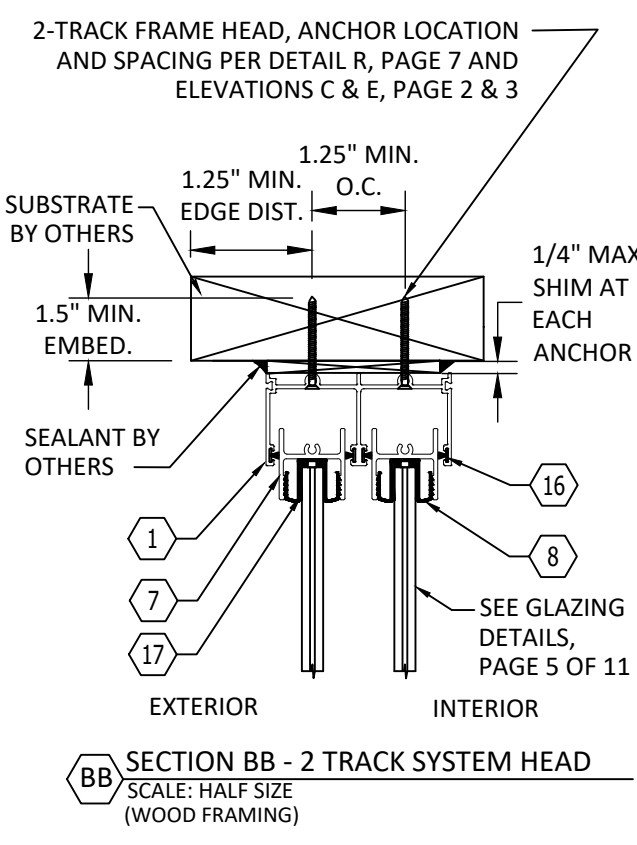
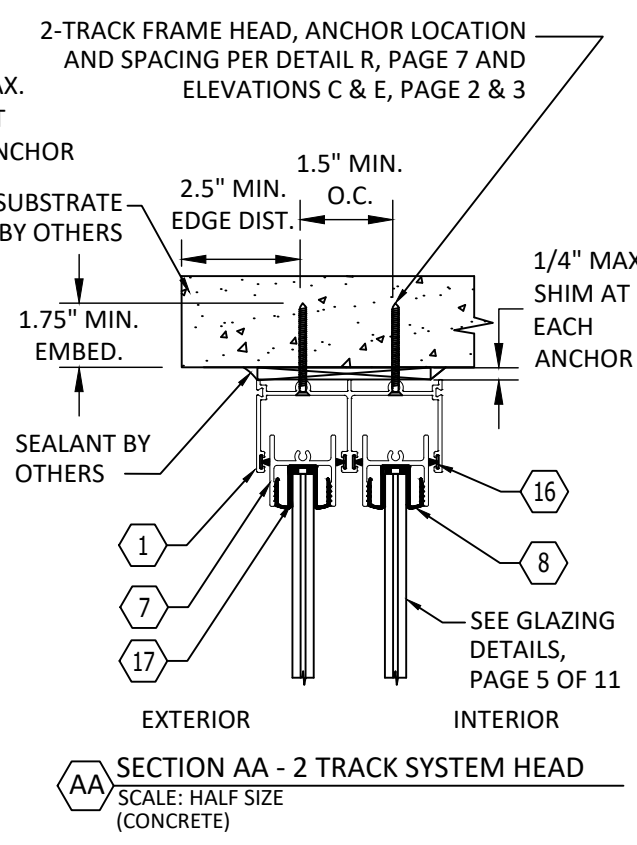
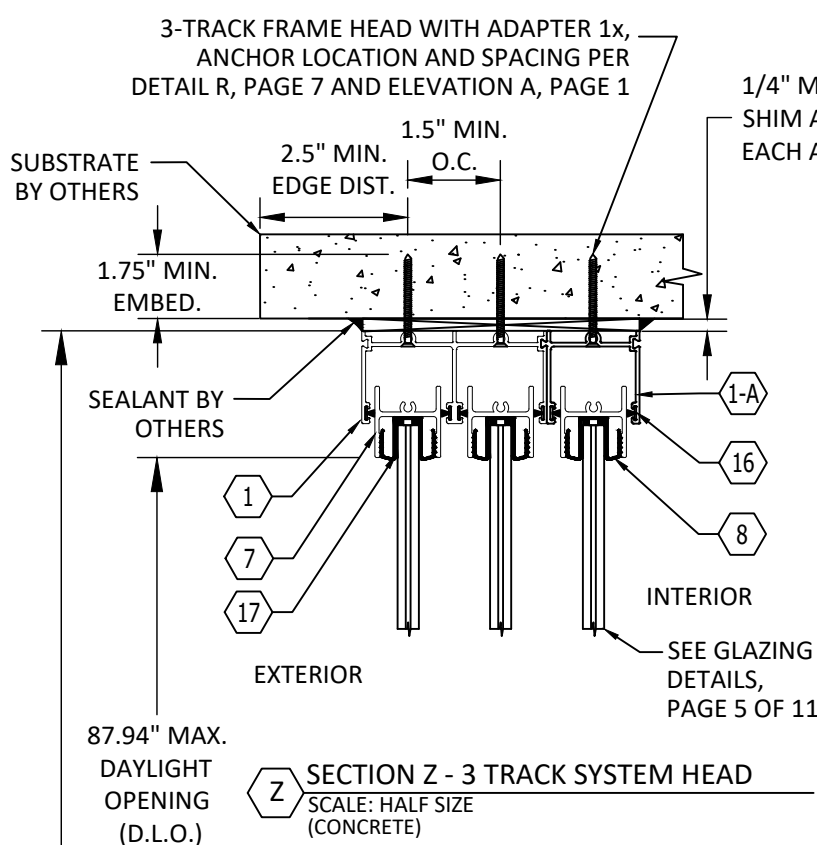
FL20662

DATE:	10/26/20
DWG. BY:	SM
CHK. BY:	HFN
SCALE:	NTS
DWG. #:	AIR008
SHEET:	OF 11

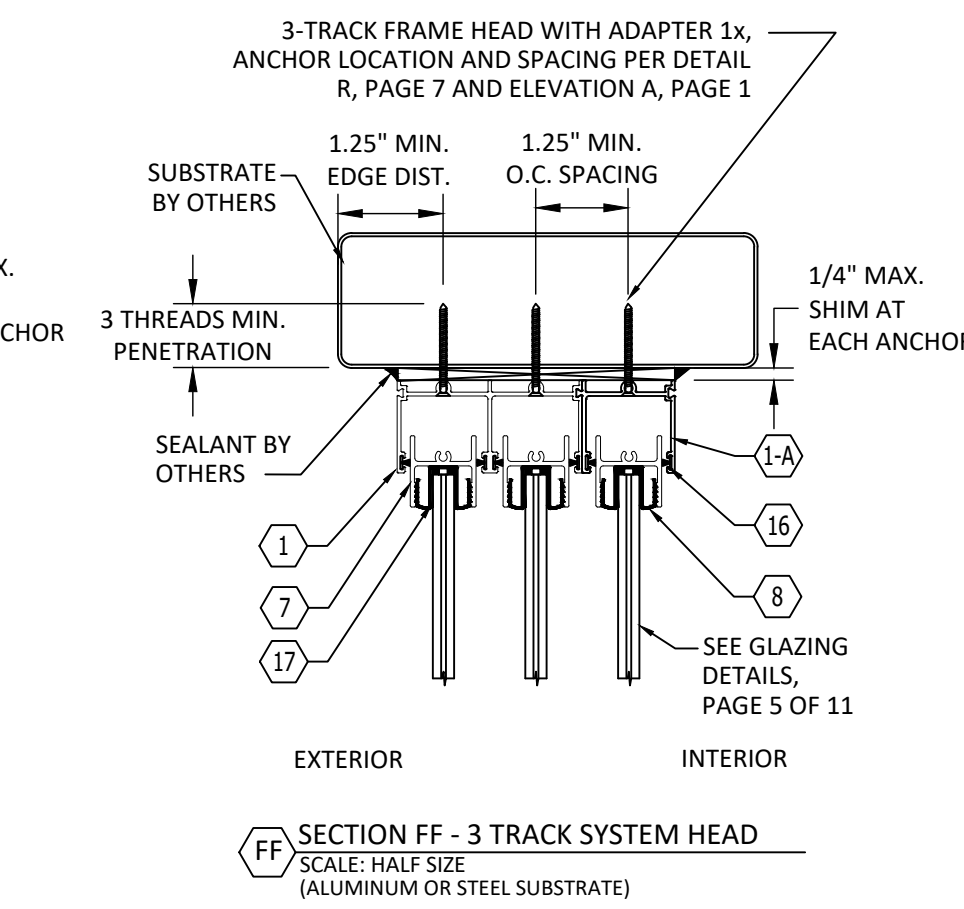
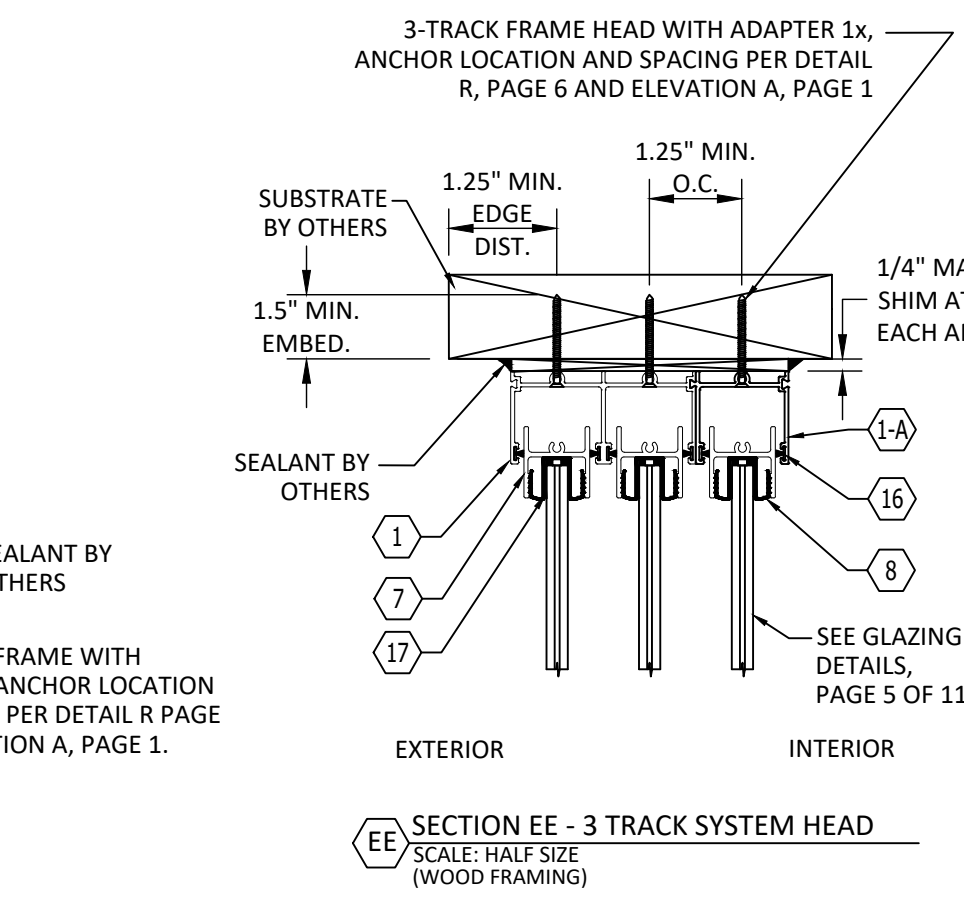
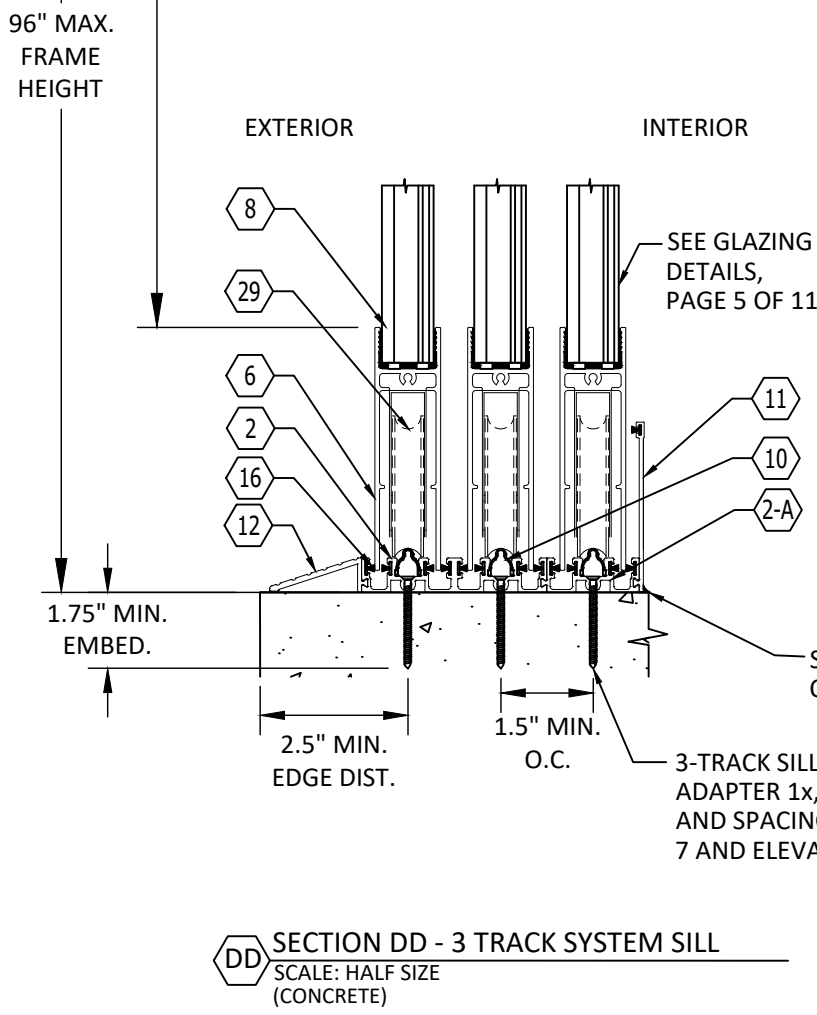
TITLE: SERIES ALUMINUM SLIDING HP DOOR (HVHZ) (IMPACT)
INSTALLATION DETAILS

PREPARED BY: BUILDING DROPS, INC.

1900 NE MIAMI CT, SUITE 2-15
MIAMI, FL 33132
PH: (954)398-8478
FAX: (954)744-4738
WEB: www.buildingdrops.com

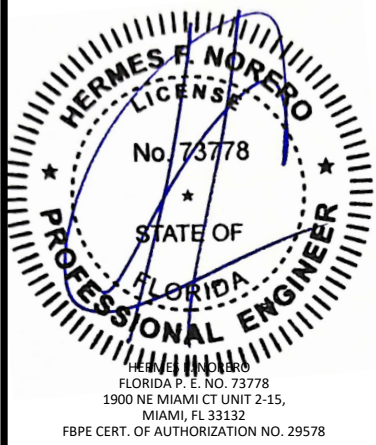


SEE NOTES ON SHEET 8 FOR MINIMUM SUBSTRATE PROPERTY REQUIREMENTS



REMARKS	BY	DATE
INTERLOCK REVISION	FB	06.24

THE INSTALLATION DETAILS DESCRIBED HEREIN ARE GENERIC AND MAY NOT REFLECT ACTUAL CONDITIONS FOR A SPECIFIC SITE. IF SITE CONDITIONS CAUSE INSTALLATION TO DEVIATE FROM THE REQUIREMENTS DETAILED HEREIN, A LICENSED ENGINEER OR ARCHITECT SHALL PREPARE SITE SPECIFIC DOCUMENTS FOR USE WITH THIS DOCUMENT.



FL20662	
DATE:	10/26/20
DWG. BY:	SM
CHK. BY:	HFN
SCALE:	NTS
DWG. #:	AIR008
SHEET:	OF 11

TABLE 1 - FOR FRAME HEIGHT 96" - HP SLIDING DOOR IR

NOMINAL HEIGHT (in)	NOMINAL WIDTH (in)	NUMBER OF PANELS	DESIGN WIND LOAD - POS. PSF	DESIGN WIND LOAD - NEG. PSF	OVERALL WIDTH W/ OUT POCKET (in)	SINGLE PANEL OVERALL WIDTH (in)	VERTICAL D.L.O. (in)	HORIZONTAL D.L.O./PANEL (IN)
96"	48	6	72.1	72.1	282.89	48.08	87.94	43.81
	44	6	72.1	72.1	258.89	44.08	87.94	39.81
	42	6	72.1	72.1	246.89	42.08	87.94	37.81
	36	6	72.1	72.1	210.89	36.08	87.94	31.81
	* 30	6	72.1	72.1	174.89	30.08	87.94	25.81
	48	5	72.1	72.1	236.94	48.08	87.94	43.81
	44	5	72.1	72.1	216.94	44.08	87.94	39.81
	42	5	72.1	72.1	206.94	42.08	87.94	37.81
	36	5	72.1	72.1	176.94	36.08	87.94	31.81
	* 30	5	72.1	72.1	146.94	30.08	87.94	25.81
	48	4	72.1	72.1	191.00	48.08	87.94	43.81
	44	4	72.1	72.1	175.00	44.08	87.94	39.81
	42	4	72.1	72.1	167.00	42.08	87.94	37.81
	36	4	72.1	72.1	143.00	36.08	87.94	31.81
	* 30	4	72.1	72.1	119.00	30.08	87.94	25.81
	48	3	72.1	72.1	145.05	48.08	87.94	43.81
	44	3	72.1	72.1	133.05	44.08	87.94	39.81
	42	3	72.1	72.1	127.05	42.08	87.94	37.81
	36	3	72.1	72.1	109.05	36.08	87.94	31.81
	* 30	3	72.1	72.1	91.05	30.08	87.94	25.81
48	2	72.1	72.1	99.10	48.08	87.94	43.81	
44	2	72.1	72.1	91.10	44.08	87.94	39.81	
42	2	72.1	72.1	87.10	42.08	87.94	37.81	
36	2	72.1	72.1	75.10	36.08	87.94	31.81	
* 30	2	72.1	72.1	63.10	30.08	87.94	25.81	

TABLE 1 NOTES:

- HORIZONTAL AND VERTICAL DAYLIGHT OPENINGS (D.L.O.'s) FOR EACH NOMINAL SIZE MAY NOT BE EXCEEDED.
- * SEE GENERAL NOTE No. 19 ON PAGE 1 OF 11.
- SEE TABLE 1A FOR ALLOWABLE PRESSURES FOR POCKET JAMB CONFIGURATIONS
- GLASS TYPES H & H1 MAY ONLY BE USED ON PANELS WITH A MAXIMUM D.L.O. AREA OF 22.7 SQ. FT., SEE SHEET 5 OF 11 FOR DETAILS

TABLE 1A - ALLOWABLE PRESSURES FOR CONFIGURATIONS USING POCKET JAMB

NOMINAL HEIGHT (in)	NOMINAL WIDTH (in)	DESIGN WIND LOAD - POS. PSF	DESIGN WIND LOAD - NEG. PSF
96" MAX.	48	60.0	50.0
	44	65.5	50.0
	42	68.6	50.0
	36	72.1	50.0
	* 30	72.1	50.0

TABLE 1A NOTES:

- TABLE 1A DESIGN PRESSURE APPLY TO CONFIGURATIONS WITH ANY NUMBER OF PANELS AND TO DOORS OF ALL HEIGHTS, UP TO THE MAXIMUM DOOR HEIGHT OF 96".
- * SEE GENERAL NOTE No. 19 ON PAGE 1 OF 11.
- GLASS TYPES H & H1 MAY ONLY BE USED ON PANELS WITH A MAXIMUM D.L.O. AREA OF 22.7 SQ. FT., SEE SHEET 5 OF 11 FOR DETAILS



P.O. BOX 2097
 BARCELONETA, PR 00617
 WWW.AIRMASTERPR.COM
 PH: (787)846-2110
 FAX: (787)623-0085

TITLE: SERIES ALUMINUM SLIDING HP DOOR (HVHZ) (IMPACT)

D.P. TABLE

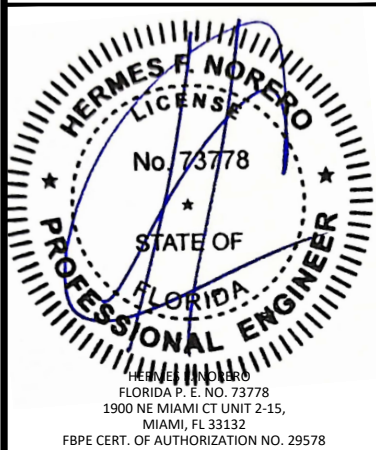
PREPARED BY: BUILDING DROPS, INC.

1900 NE MIAMI CT, SUITE 2-15
 MIAMI, FL 33132
 PH: (954)958-8478
 FAX: (954)744-4738
 WEB: www.buildingdrops.com



REMARKS	BY	DATE
INTERLOCK REVISION	FB	06.24

THE INSTALLATION DETAILS DESCRIBED HEREIN ARE GENERIC AND MAY NOT REFLECT ACTUAL CONDITIONS FOR A SPECIFIC SITE. IF SITE CONDITIONS CAUSE INSTALLATION TO DEVIATE FROM THE REQUIREMENTS DETAILED HEREIN, A LICENSED ENGINEER OR ARCHITECT SHALL PREPARE SITE SPECIFIC DOCUMENTS FOR USE WITH THIS DOCUMENT.



FL20662

DATE: 10/26/20

DWG. BY: SM CHK. BY: HFN

SCALE: NTS

DWG. #: AIR008

SHEET: OF 11

10

TITLE: **SERIES ALUMINUM SLIDING HP DOOR (HVHZ) (IMPACT)**
D.P. TABLE AND ELEVATIONS

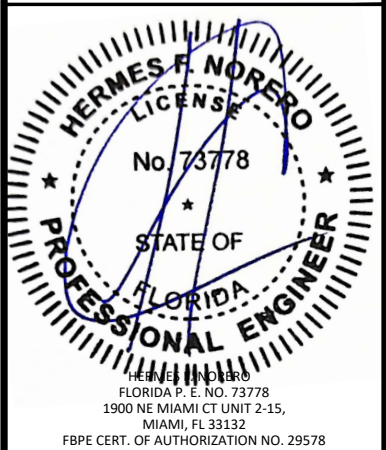
PREPARED BY: **BUILDING DROPS, INC.**

1900 NE MIAMI CT, SUITE 2-15
MIAMI, FL 33132
PH: (954)398-8478
FAX: (954)744-4738
WEB: www.buildingdrops.com



REMARKS	BY	DATE
INTERLOCK REVISION	FB	06.24

THE INSTALLATION DETAILS DESCRIBED HEREIN ARE GENERIC AND MAY NOT REFLECT ACTUAL CONDITIONS FOR A SPECIFIC SITE. IF SITE CONDITIONS CAUSE INSTALLATION TO DEVIATE FROM THE REQUIREMENTS DETAILED HEREIN, A LICENSED ENGINEER OR ARCHITECT SHALL PREPARE SITE SPECIFIC DOCUMENTS FOR USE WITH THIS DOCUMENT.



FL20662

DATE: **10/26/20**

DWG. BY: **SM** CHK. BY: **HFN**

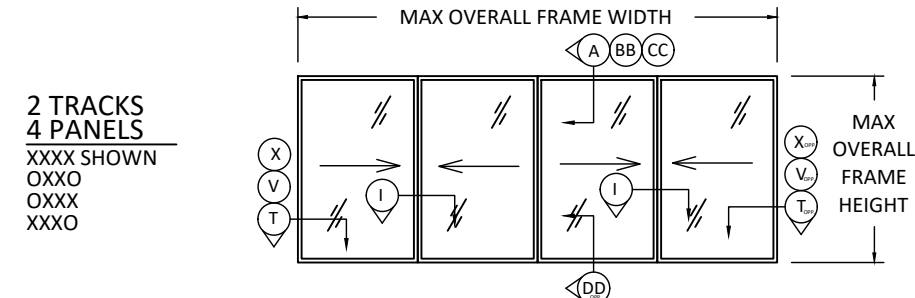
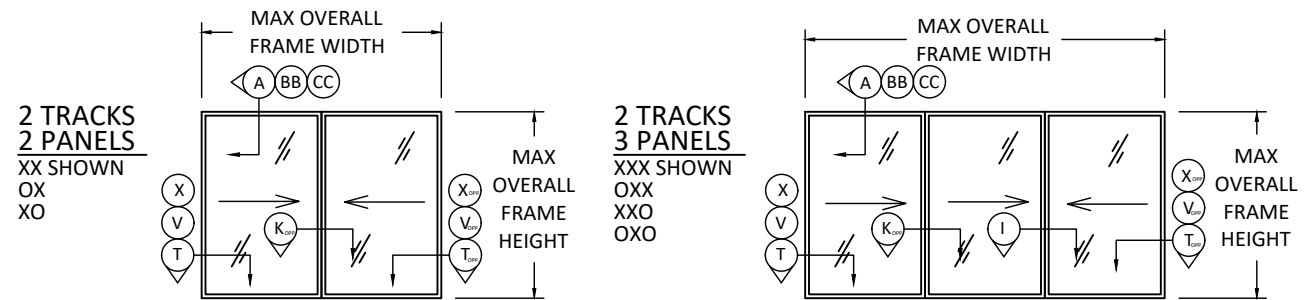
SCALE: **NTS**

DWG. #: **AIR008**

SHEET: OF 11

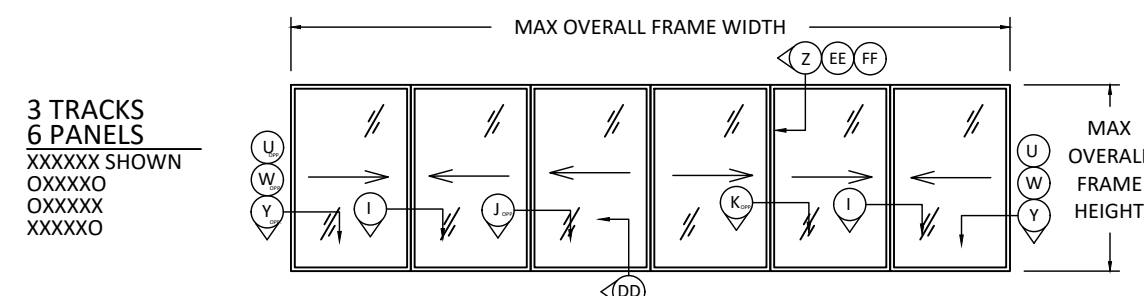
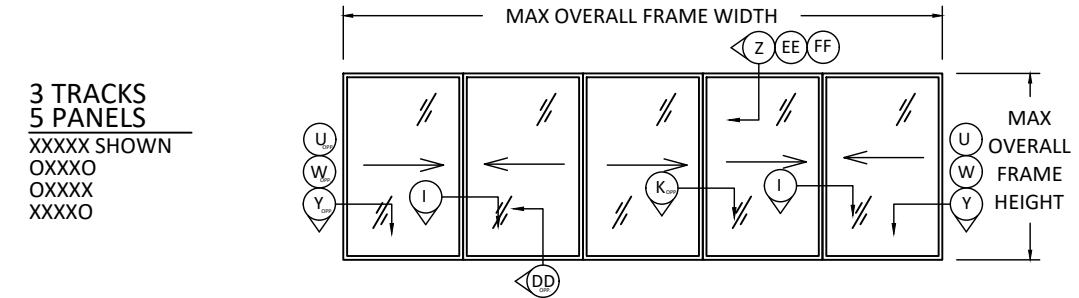
TABLE 1, CONTINUED - FOR FRAME HEIGHTS 84" & 80" - HP SLIDING DOOR IR

NOMINAL HEIGHT (in)	NOMINAL WIDTH (in)	NUMBER OF PANELS	DESIGN WIND LOAD - POS. PSF	DESIGN WIND LOAD - NEG. PSF	OVERALL WIDTH W/ OUT POCKET (in)	SINGLE PANEL OVERALL WIDTH (in)	VERTICAL D.L.O. (in)	HORIZONTAL D.L.O./PANEL (in)
84"	48	6	72.1	72.1	282.89	48.08	75.94	43.81
	44	6	72.1	72.1	258.89	44.08	75.94	39.81
	42	6	72.1	72.1	246.89	42.08	75.94	37.81
	36	6	72.1	72.1	210.89	36.08	75.94	31.81
	* 30	6	72.1	72.1	174.89	30.08	75.94	25.81
	48	5	72.1	72.1	236.94	48.08	75.94	43.81
	44	5	72.1	72.1	216.94	44.08	75.94	39.81
	42	5	72.1	72.1	206.94	42.08	75.94	37.81
	36	5	72.1	72.1	176.94	36.08	75.94	31.81
	* 30	5	72.1	72.1	146.94	30.08	75.94	25.81
	48	4	72.1	72.1	191.00	48.08	75.94	43.81
	44	4	72.1	72.1	175.00	44.08	75.94	39.81
	42	4	72.1	72.1	167.00	42.08	75.94	37.81
	36	4	72.1	72.1	143.00	36.08	75.94	31.81
	* 30	4	72.1	72.1	119.00	30.08	75.94	25.81
	48	3	72.1	72.1	145.05	48.08	75.94	43.81
	44	3	72.1	72.1	133.05	44.08	75.94	39.81
	42	3	72.1	72.1	127.05	42.08	75.94	37.81
	36	3	72.1	72.1	109.05	36.08	75.94	31.81
	* 30	3	72.1	72.1	91.05	30.08	75.94	25.81
48	2	72.1	72.1	99.10	48.08	75.94	43.81	
44	2	72.1	72.1	91.10	44.08	75.94	39.81	
42	2	72.1	72.1	87.10	42.08	75.94	37.81	
36	2	72.1	72.1	75.10	36.08	75.94	31.81	
* 30	2	72.1	72.1	63.10	30.08	75.94	25.81	
80"	48	6	72.1	72.1	282.89	48.08	71.94	43.81
	44	6	72.1	72.1	258.89	44.08	71.94	39.81
	42	6	72.1	72.1	246.89	42.08	71.94	37.81
	36	6	72.1	72.1	210.89	36.08	71.94	31.81
	* 30	6	72.1	72.1	174.89	30.08	71.94	25.81
	48	5	72.1	72.1	236.94	48.08	71.94	43.81
	44	5	72.1	72.1	216.94	44.08	71.94	39.81
	42	5	72.1	72.1	206.94	42.08	71.94	37.81
	36	5	72.1	72.1	176.94	36.08	71.94	31.81
	* 30	5	72.1	72.1	146.94	30.08	71.94	25.81
	48	4	72.1	72.1	191.00	48.08	71.94	43.81
	44	4	72.1	72.1	175.00	44.08	71.94	39.81
	42	4	72.1	72.1	167.00	42.08	71.94	37.81
	36	4	72.1	72.1	143.00	36.08	71.94	31.81
	* 30	4	72.1	72.1	119.00	30.08	71.94	25.81
	48	3	72.1	72.1	145.05	48.08	71.94	43.81
	44	3	72.1	72.1	133.05	44.08	71.94	39.81
	42	3	72.1	72.1	127.05	42.08	71.94	37.81
	36	3	72.1	72.1	109.05	36.08	71.94	31.81
	* 30	3	72.1	72.1	91.05	30.08	71.94	25.81
48	2	72.1	72.1	99.10	48.08	71.94	43.81	
44	2	72.1	72.1	91.10	44.08	71.94	39.81	
42	2	72.1	72.1	87.10	42.08	71.94	37.81	
36	2	72.1	72.1	75.10	36.08	71.94	31.81	
* 30	2	72.1	72.1	63.10	30.08	71.94	25.81	



DESIGN PRESSURE RATING	IMPACT RATING
+/- 72.1 PSF*	LARGE AND SMALL MISSILE IMPACT

NOTE: SEE TABLE 1A ON SHEET 10 OF 11 FOR DESIGN PRESSURE RATINGS FOR CONFIGURATIONS USING POCKET JAMBS



DESIGN PRESSURE RATING	IMPACT RATING
+/- 72.1 PSF*	LARGE AND SMALL MISSILE IMPACT

NOTE: SEE TABLE 1A ON SHEET 10 OF 11 FOR DESIGN PRESSURE RATINGS FOR CONFIGURATIONS USING POCKET JAMBS

GG SLIDING DOOR CONFIGURATIONS
N.T.S.

TABLE 1 NOTES:

- HORIZONTAL AND VERTICAL DAYLIGHT OPENINGS (D.L.O.'s) FOR EACH NOMINAL SIZE MAY NOT BE EXCEEDED.
- * SEE GENERAL NOTE No. 19 ON PAGE 1 OF 11.
- SEE TABLE 1A FOR ALLOWABLE PRESSURES FOR POCKET JAMB CONFIGURATIONS
- GLASS TYPES H & H1 MAY ONLY BE USED ON PANELS WITH A MAXIMUM D.L.O. AREA OF 22.7 SQ. FT., SEE SHEET 5 OF 11 FOR DETAILS